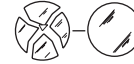


IMPORTANT INSTRUCTIONS



For Installation LS343: PureOptics, MH, Halospot



Warning: The Luminaire should only be used complete with its protective shield (cover)
To avoid potential unsafe lamp failure, the luminaire should be switched off at least once a week

Lumascope Lighting Industries Pty Ltd
38-44 Enterprise Street, Cleveland, QLD 4163, Australia
PO Box 1875, Cleveland D.C., QLD 4163, Australia
T 07 3286 2299
F 07 3286 6599
E sales@lumascope.com.au
W www.lumascope.com.au

WARNING

If cable is damaged replace with cable supplied by LUMASCAPE only.

DO NOT SHORTEN, INTERFERE OR DISCONNECT CABLE FROM FITTING. WARRANTY WILL BE VOID IF CABLE ASSEMBLY IS TAMPERED WITH.

CAUTION



DO NOT OVERTIGHTEN



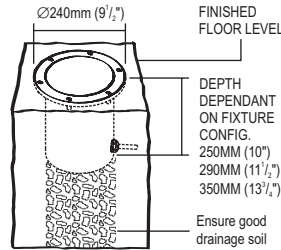
NO DOWNWARD FORCE



NO POWER TOOLS

Do not use power tools to tighten screws. Do not exert downward force on screws while not fully tightened. Do not overtighten screws.

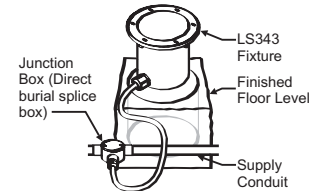
1



Locate Fixtures.

Site fixture, in proximity to cabling, in gravel, soil or concrete. Use discretion in locating fixtures as glass can become very hot and may burn.

2



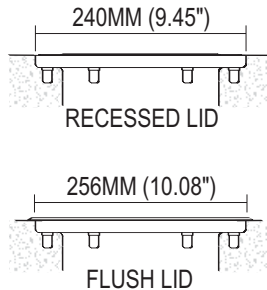
Supply Connection

Connect junction box (direct burial splice box) to supply conduit as per instructions. For cable only entry connect underwater rated cable in accordance with local wiring rules. Alternatively, if ordered with 1/2"NPT conduit adaptor connect ensuring watertight seal.

North America Only

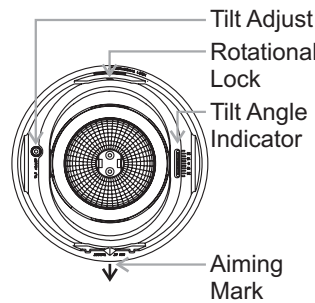
Warning: Overcurrent protection for secondary circuit must be provided at the supply transformer in accordance with the National Electric Code.

3



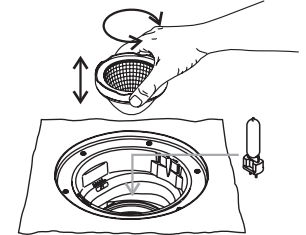
Mount Fixture.

Mount fixture such that the top lip of flange is flush with finished floor level, as shown above.



Gimbal Features.

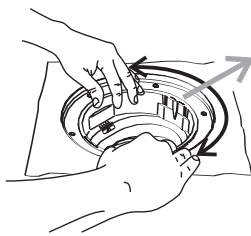
4



Insert lamp into fixture.

Unscrew reflector and remove. Insert lamp into lampholder and test. Replace reflector. To ensure reflector does not bind due to heat screw all the way down, then back off 1/8th of a turn

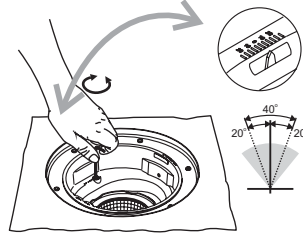
5



Target Gimbal 1.

Rotate gimbal until the **Aiming Mark** is targeted as desired.

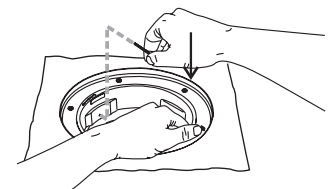
6



Target Gimbal 2.

Adjust gimbal tilt angle by rotating **Tilt Adjust** screw with Allen key supplied. Approximate angle can be read from the **Tilt Angle Indicator**.

7

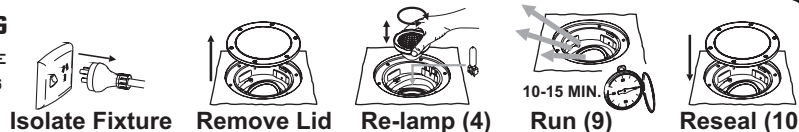


Lock Gimbal.

Whilst exerting downward pressure on gimbal, tighten Rotational Lock grub screw.

RELAMPING

BRACKETS INDICATE INSTALLATION STEPS ABOVE



www.lumascope.com.au

B IMPORTANT INSTRUCTIONS

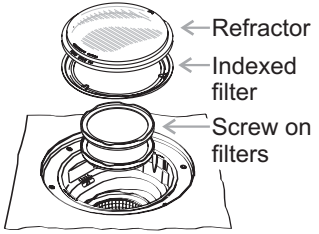
For Installation LS343: PureOptics, MH, Halospot

Warning: The Luminaire should only be used complete with its protective shield (cover)
To avoid potential unsafe lamp failure, the luminaire should be switched off at least once a week

Lumascope Lighting Industries Pty Ltd
 38-44 Enterprise Street, Cleveland, QLD 4163, Australia
 PO Box 1875, Cleveland D.C., QLD 4163, Australia
 T 07 3286 2299
 F 07 3286 6599
 E sales@lumascope.com.au
 W www.lumascope.com.au

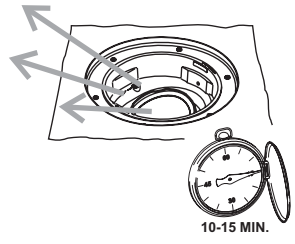
WARNING If cable is damaged replace with cable supplied by LUMASCAPE only.
 DO NOT SHORTEN, INTERFERE OR DISCONNECT CABLE FROM FITTING. WARRANTY WILL BE VOID IF CABLE ASSEMBLY IS TAMPERED WITH.

5



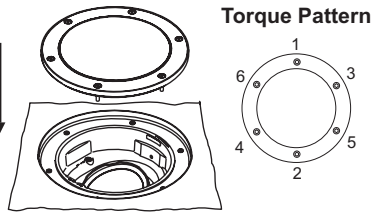
Accessories.
 Add accessories. Note instructions supplied with accessory. Further gimbal adjustments may be required with accessories in place.

6



Run Fixture.
 Allow to burn for 10-15 minutes without lid attached to allow any moisture in fixture to

7



Seal Fixture
 Ensure seal and sealing surface is clean. Clean glass if necessary. Tighten lid screws using the 3mm Allen key supplied. Lumascope recommends tightening in the above Torque Pattern to 2.5 - 3 N.m. DO NOT OVER TIGHTEN.

NORTH AMERICA only:
 As per 2002 NEC Section 305. The SOOW cord must be at least 450mm (18 in.) below a minimum 2 inch thick concrete slab.



IMPORTANT INSTRUCTIONS

For Installation LS343: PureOptics, MH, Halospot

Warning: The Luminaire should only be used complete with its protective shield (cover)
To avoid potential unsafe lamp failure, the luminaire should be switched off at least once a week

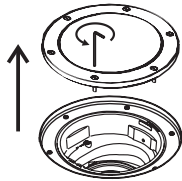
Lumascope Lighting Industries Pty Ltd
 38-44 Enterprise Street, Cleveland, QLD 4163, Australia
 PO Box 1875, Cleveland D.C., QLD 4163, Australia
 T 07 3286 2299
 F 07 3286 6599
 E sales@lumascope.com.au
 W www.lumascope.com.au

LAMP SOURCE CONVERSION INSTRUCTION

WARNING

DO NOT SHORTEN, INTERFERE OR DISCONNECT CABLE FROM FITTING. WARRANTY WILL BE VOID IF CABLE ASSEMBLY IS TAMPERED WITH.

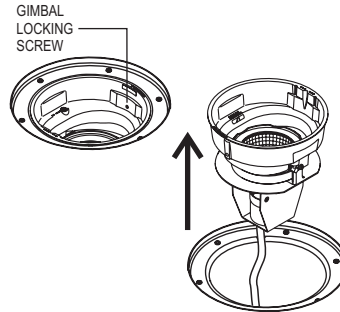
1



Isolate and Open Fixture

Ensure the fixture is electrically isolated. Loosen the screws with the Allen Key provided. If necessary gently lever lid out with a large screwdriver.

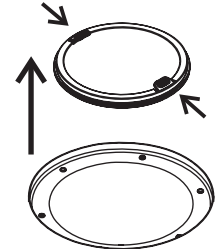
2



Remove Gimbal

Remove gimbal by loosening the locking screw and pulling vertically.

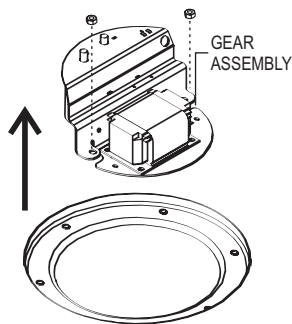
3



Remove Heat Shield

Remove heat shield (if supplied) by holding one finger tab and lifting straight out of fixture

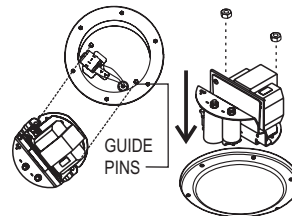
4



Remove Gear Assembly

Remove gear assembly by pulling vertically (Note: Gear assembly may be screwed to fixture body).

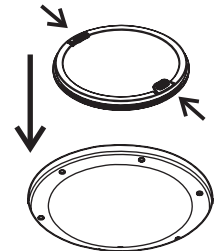
5



Insert New Gear Assembly

Align holes in gear tray with Threaded Guide Pins in base of fixture and insert fully, fit S/S nuts to retain Gear Tray.

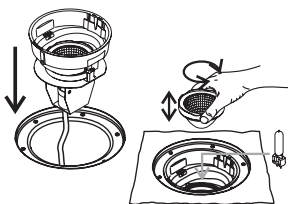
6



Replace Heat Shield

Push heat shield (if supplied) down into fixture ensuring that the shiny side is facing up, and that it comes to rest level atop gear assembly

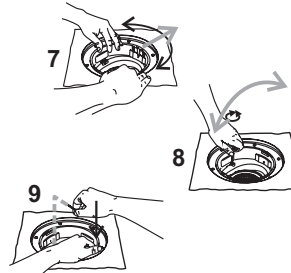
7



Replace/Insert Gimbal and Lamp

Connect and insert gimbal into fixture. Remove reflector and insert new lamp, (Check wattage and type with gear label). Refer installation instruction 4 Over.

8



Adjust, Aim, Test and Seal

If necessary, readjust and re-aim gimbal position as per instructions 5,6,7 over. Test and seal fixture as per Instructions 8,9,10.

www.lumascope.com.au

IMPORTANT SAFETY INSTRUCTIONS

WARNING - To reduce the risk of FIRE or INJURY:

1. Luminaires and transformers to be installed by qualified installers only.
2. Luminaires to be used for intended purpose only. e.g Wall Mount fittings must be wall mounted.
3. Luminaires can become very hot. Use discretion in placement.
4. Do not touch hot lens, guard, or enclosure.
5. CAUTION - HOT SURFACE. Keep away from curtains and other combustible material.
6. Turn Off/Unplug and allow to cool before replacing lamp.
7. Keep lamp away from materials that may burn.
8. Never touch lamp with bare fingers. Oil from skin may damage lamp. Hold lamp with soft cloth when installing or replacing.
9. Do not operate the luminaires with a missing or damaged parts.
10. Replace any cracked protective shield
11. Use only lamp type, voltage and wattage as specified by Lumascap on the product label.
12. Use only genuine Lumascap parts to replace damaged or missing components.
13. Luminaires supplied with Loctite Silver Grade Anti Seize lubricant on threads. Reapply if needed.
14. Refer to instructions for installation and operating requirements.
15. Ensure installation complies with local regulations

SAVE THESE INSTRUCTIONS.

LUMASCAPE
 HEAD OFFICE - QLD
 Tel (07) 3286 2299
 Fax (07) 3286 6599

LUMASCAPE
 SYDNEY - NSW
 Tel (02) 9519 6860
 Fax (02) 9519 8834

LUMASCAPE
 MELBOURNE - VIC
 Tel (03) 9686 1900
 Fax (03) 9686 1700

LUMASCAPE USA INC.
 SAN FRANCISCO - CA
 Tel 1-(650)-595-5862
 Fax 1-(650) 595-5820

H.I. LIGHTING
 LUMASCAPE AGENT - WA
 Tel (08) 9321 5422
 Fax (08) 9321 5881

LIGHTING PARTNERS AUSTRALIA
 LUMASCAPE AGENT - SA
 Tel (08) 8232 0074
 Fax (08) 8232 0076

NQ LIGHTING
 LUMASCAPE AGENT - NTH QLD
 Tel (07) 4031 4490
 Fax (07) 4031 5933

ECC LIGHTING
 LUMASCAPE AGENT - NZ
 Tel (09) 379 9680
 Fax (09) 308 9328