

# IMPORTANT INSTRUCTIONS

## For Installation LS853 MH CDM-TM SERIES



**Warning: The Luminaire should only be used complete with its protective shield (cover)**  
To avoid potential unsafe lamp failure, the luminaire should be switched off at least once a week

**Lumascap Lighting Industries Pty Ltd**  
38-44 Enterprise Street, Cleveland, QLD 4163, Australia  
PO Box 1875, Cleveland D.C., QLD 4163, Australia  
T 07 3286 2299  
F 07 3286 6599  
E sales@lumascap.com.au  
W www.lumascap.com.au

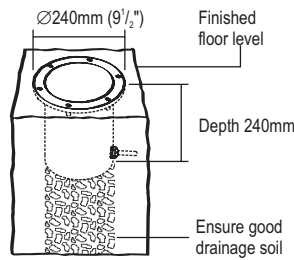
**Warning:** When mounting fixtures, parts provided by Lumascap must be used.. Always check maximum wattage and lamp type before relamping. Follow lamp manufacturers instructions for lamp replacement. Failing to follow these instructions will void warranty.

### 1 CAUTION



Do not use power tools to tighten screws. Do not exert downward force on screws while not fully tightened. Do not overtighten screws.

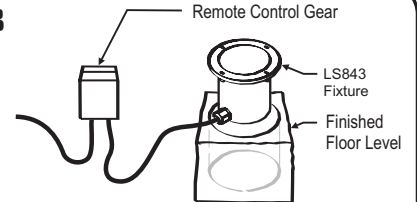
### 2



#### Locate Fixtures

Site fixture, in proximity to cabling, in gravel, soil or concrete. Use discretion in locating fixtures as glass can become very hot and may burn.

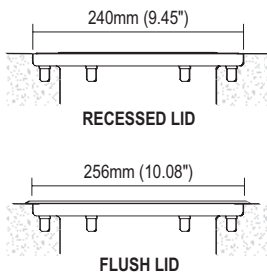
### 3



#### Supply Connection

Install Remote Control gear in a suitable location and connect to fixture. Refer to C1665: Remote Control Gear Installation Instructions for correct connection.

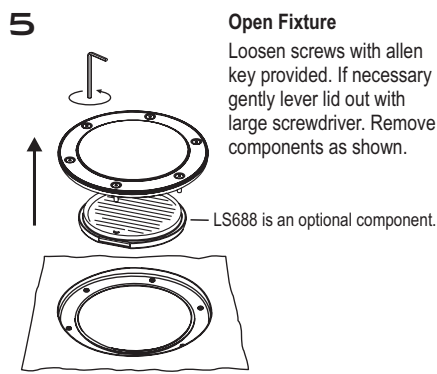
### 4



#### Mount Fixture

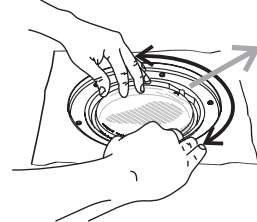
Mount fixture such that the top lip of flange is flush with finished floor level, as shown above.

### 5



### 6

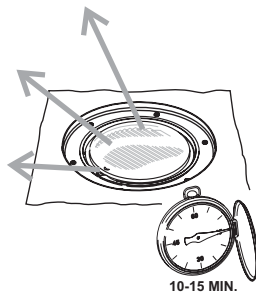
**NOTE:** This step is only necessary when dealing with the LS688 Wallwash lens



#### Target Wallwash Lens

With lamp illuminated insert wallwash lens and rotate until targeted as required.

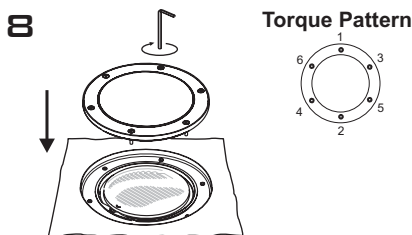
### 7



#### Run Fixture

Replace accessories and allow fixture to burn for 10-15 minutes to allow any moisture in fixture to evaporate.

### 8

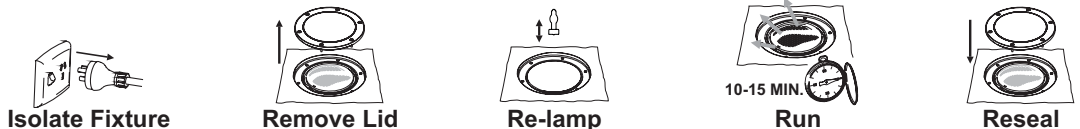


#### Seal Fixture.

Ensure seal and sealing surface is clean. Clean glass if necessary. Incrementally tighten lid screws using the 3mm Allen key supplied. Lumascap recommends tightening in the above Torque Pattern to 2.5 - 3 N.m.. DO NOT OVER TIGHTEN.

## RELAMPING

BRACKETS INDICATE INSTALLATION STEPS ABOVE

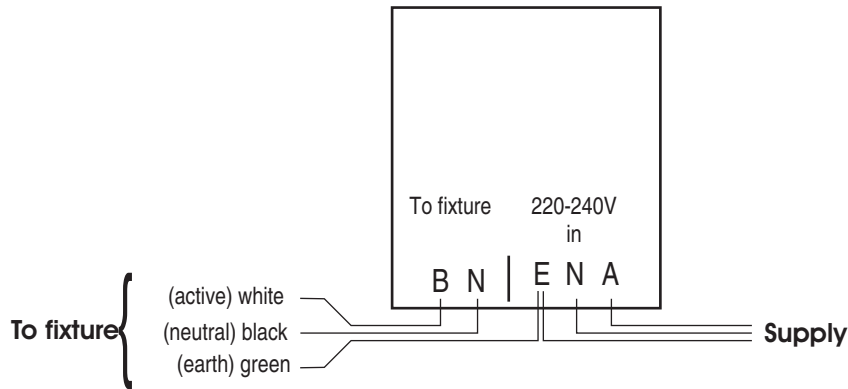


**A** **START HERE** **IMPORTANT INSTRUCTIONS**  
For Installation of Remote Gear Enclosure

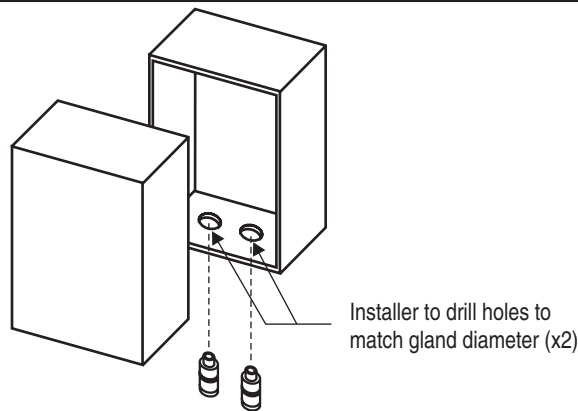
Warning: The Luminaire should only be used complete with its protective shield (cover)

Lumascope Lighting Industries Pty Ltd  
38-44 Enterprise Street, Cleveland, QLD 4163, Australia  
PO Box 1875, Cleveland D.C., QLD 4163, Australia  
T 07 3286 2299  
F 07 3286 6599  
E sales@lumascope.com.au  
W www.lumascope.com.au

# 1 Circuit Diagram




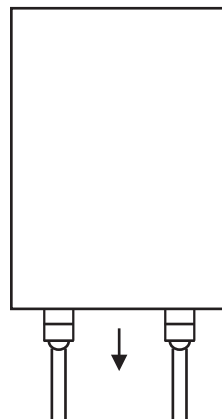
# 2 Gland Installation



# 3 Enclosure Orientation

Install glands in downward position to ensure water runoff.

**NOTE**  SILICONE  
If orientation of gear enclosure (as shown) is not possible, then ensure gland entry is also protected by silicone from the inside.



[www.lumascope.com.au](http://www.lumascope.com.au)