

# A IMPORTANT INSTRUCTIONS

## For Installation LS343 Human Touch Retro-Fit Kits

Warning: The Luminaire should only be used complete with its protective shield (cover)

Lumascap Lighting Industries Pty Ltd  
38-44 Enterprise Street, Cleveland, QLD 4163, Australia  
PO Box 1875, Cleveland D.C., QLD 4163, Australia  
T 07 3286 2299  
F 07 3286 6599  
E sales@lumascap.com.au  
W www.lumascap.com.au

### CAUTION - This Product Must Only Be Installed/fitted By A Licensed Electrical Worker

#### WARNING

DO NOT SHORTEN, INTERFERE OR DISCONNECT CABLE FROM FITTING. WARRANTY WILL BE VOID IF CABLE ASSEMBLY IS TAMPERED WITH.

## Instruction Guide

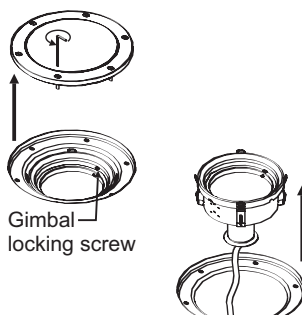
### IMPORTANT NOTE:

Human Touch kits are available for LS343 series fixtures in 290mm & 350mm Bodies ONLY!

For Kit Numbers.	Follow Instructions Sets
LS657, LS658	Instruction Set A Followed by Instruction Set C
LS654, LS655	Instruction Set B Followed by Instruction Set C
LS651, LS652	Instruction Set C Only

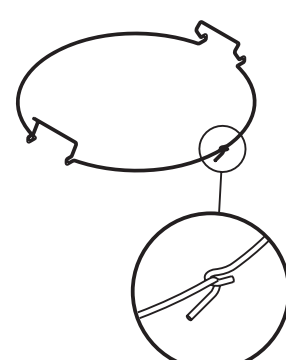
## Instruction Set A REFLECTOR GLASS ATTACHMENT FOR LS657, LSD658 ONLY

**1**



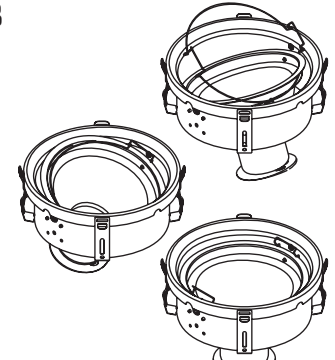
**Isolate and remove Gimbal**  
Check the fixture is electrically isolated. Unscrew & remove lid. Loosen gimbal locking screw and remove assembly.

**2**



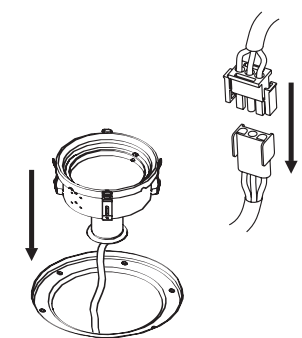
**Join clip ends**  
Ensure two hooks on clip are interlocked.

**3**



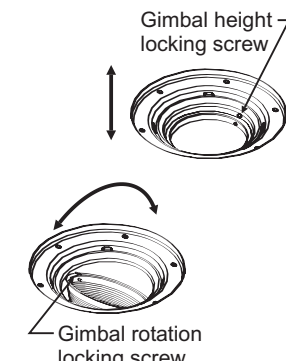
**Attach Clip to Reflector**  
Positioning the join under the lip of the reflector. Stretch the clip over the reflector as shown

**4**



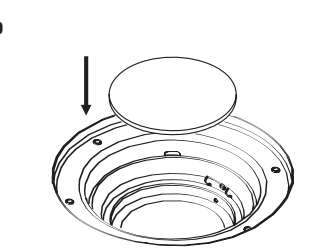
**Return Gimbal into Fixture**  
Connect & insert gimbal into fixture. Re-adjust Rotation, angle & depth. Lock off Gimbal.

**5**



**Adjust Gimbal position**  
Re-aim gimbal to desired focal point. Lock gimbal depth and rotation.

**6**



**Insert Reflector Glass**  
Insert reflector glass into clip on reflector. Ensure glass is flat and central against reflector. Avoid touching Glass as best as possible.

Further information over page

[www.lumascap.com.au](http://www.lumascap.com.au)

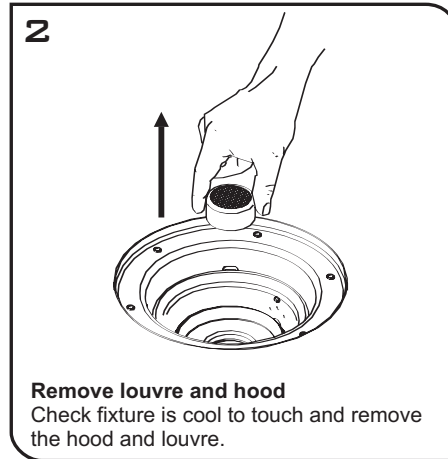
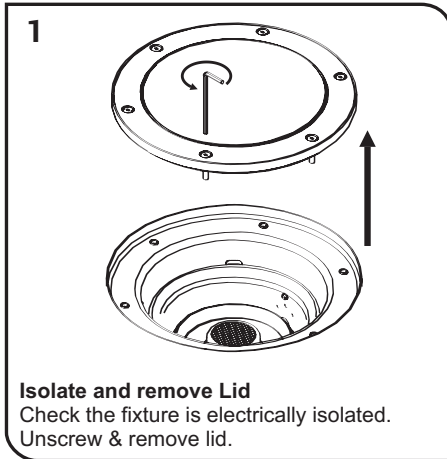
## B IMPORTANT INSTRUCTIONS

For Installation LS343 Human Touch Retro-Fit Kits

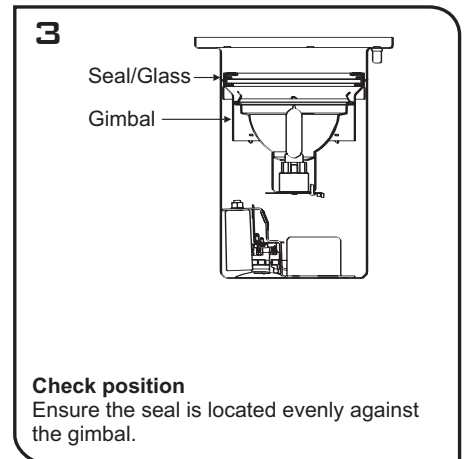
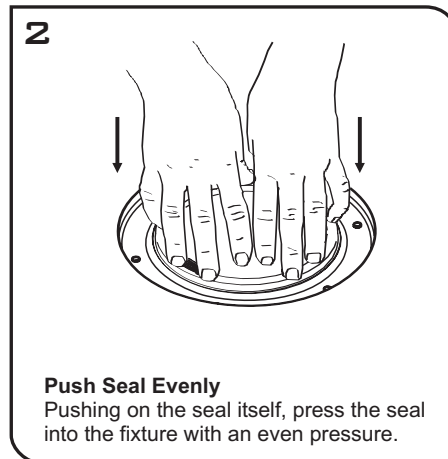
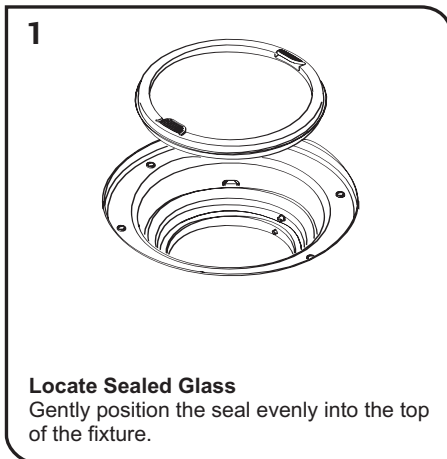
Warning: The Luminaire should only be used complete with its protective shield (cover)

Lumascap Lighting Industries Pty Ltd  
38-44 Enterprise Street, Cleveland, QLD 4163, Australia  
PO Box 1875, Cleveland D.C., QLD 4163, Australia  
T 07 3286 2299  
F 07 3286 6599  
E sales@lumascap.com.au  
W www.lumascap.com.au

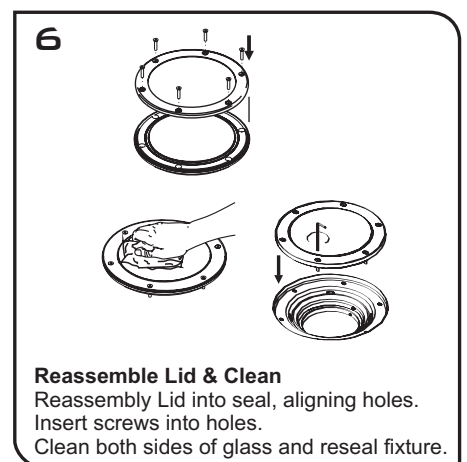
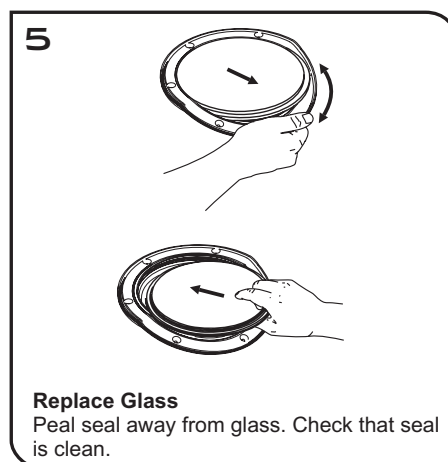
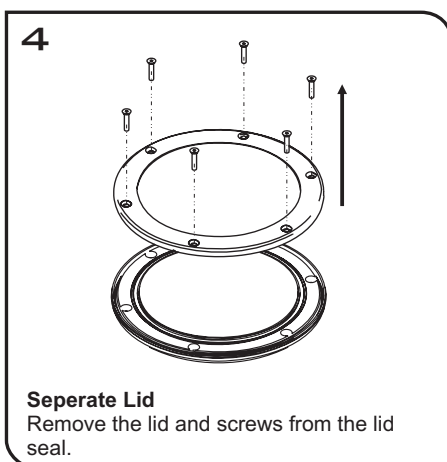
### Instruction Set B LAMP GLASS ATTACHMENT FOR LS654 LS655 ONLY



### Instruction Set C SEAL GLASS ATTACHMENT FOR ALL LS343 HUMAN TOUCH KITS



### Instructions 4, 5 & 6 Applicable only with kits LS651, LS654 & LS657



www.lumascap.com.au

## IMPORTANT SAFETY INSTRUCTIONS

### WARNING - To reduce the risk of FIRE or INJURY:

1. Luminaires and transformers to be installed by qualified installers only.
2. Luminaires to be used for intended purpose only. e.g Wall Mount fittings must be wall mounted.
3. Luminaires can become very hot. Use discretion in placement.
4. Do not touch hot lens, guard, or enclosure.
5. CAUTION - HOT SURFACE. Keep away from curtains and other combustible material.
6. Turn Off/Unplug and allow to cool before replacing lamp.
7. Keep lamp away from materials that may burn.
8. Never touch lamp with bare fingers. Oil from skin may damage lamp. Hold lamp with soft cloth when installing or replacing.
9. Do not operate the luminaires with a missing or damaged parts.
10. Replace any cracked protective shield
11. Use only lamp type, voltage and wattage as specified by Lumascap on the product label.
12. Use only genuine Lumascap parts to replace damaged or missing components.
13. Luminaires supplied with Loctite Silver Grade Anti Seize lubricant on threads. Reapply if needed.
14. Refer to instructions for installation and operating requirements.
15. Ensure installation complies with local regulations

### SAVE THESE INSTRUCTIONS.

LUMASCAPE  
 HEAD OFFICE - QLD  
 Tel (07) 3286 2299  
 Fax (07) 3286 6599

LUMASCAPE  
 SYDNEY - NSW  
 Tel (02) 9519 6860  
 Fax (02) 9519 8834

LUMASCAPE  
 MELBOURNE - VIC  
 Tel (03) 9686 1900  
 Fax (03) 9686 1700

LUMASCAPE USA INC.  
 SAN FRANCISCO - CA  
 Tel 1-(650)-595-5862  
 Fax 1-(650) 595-5820

H.I. LIGHTING  
 LUMASCAPE AGENT - WA  
 Tel (08) 9321 5422  
 Fax (08) 9321 5881

LIGHTING PARTNERS AUSTRALIA  
 LUMASCAPE AGENT - SA  
 Tel (08) 8232 0074  
 Fax (08) 8232 0076

NQ LIGHTING  
 LUMASCAPE AGENT - NTH QLD  
 Tel (07) 4031 4490  
 Fax (07) 4031 5933

ECC LIGHTING  
 LUMASCAPE AGENT - NZ  
 Tel (09) 379 9680  
 Fax (09) 308 9328