

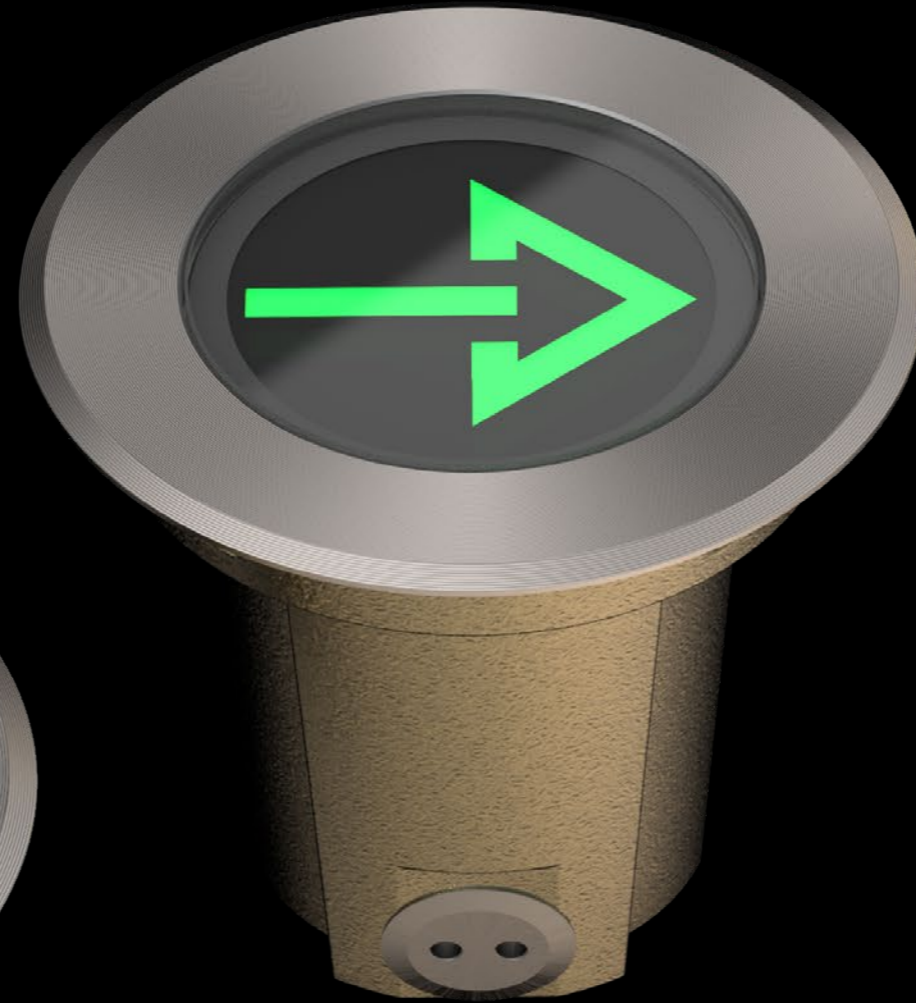
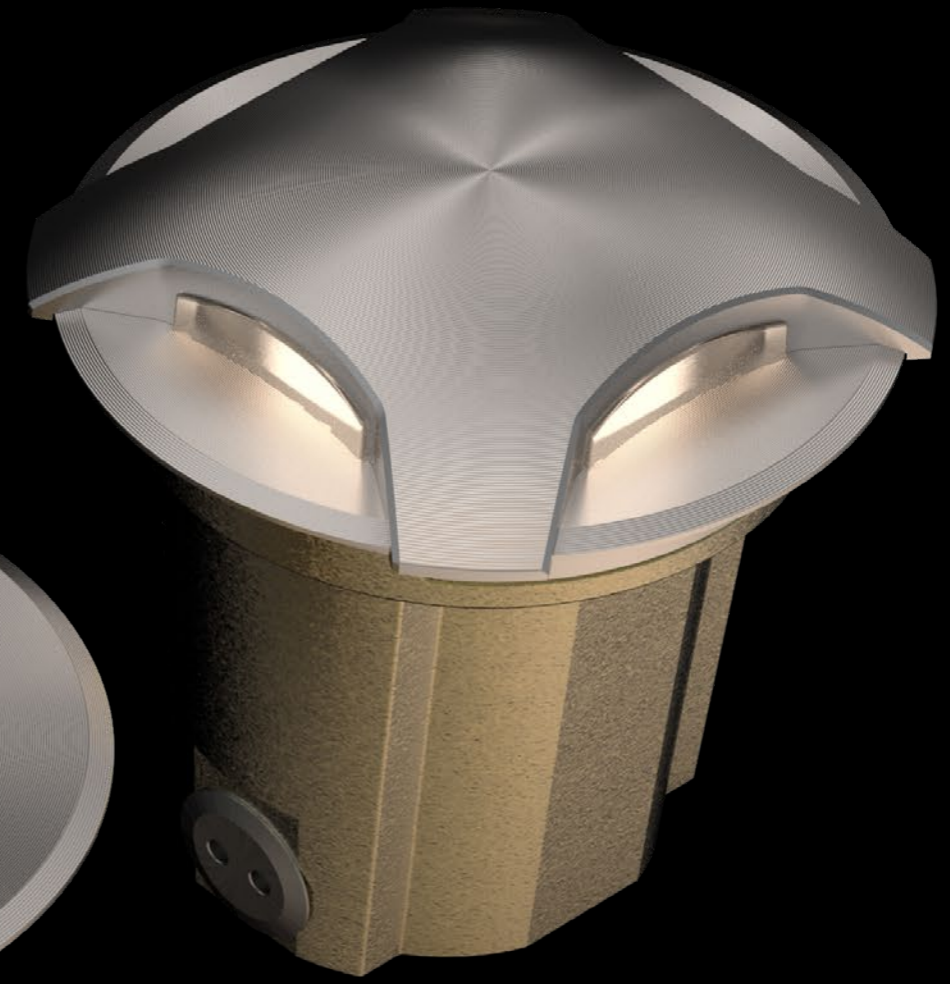
Erden Brass EB2

LS3320 / LS3322
LS3326 / LS3328
LS3720 / LS3722



Erden Brass EB2

LS3020 / LS3022
LS3326 / LS3328
LS3720 / LS3722



The Erden Brass EB2 is a compact, high-performance inground luminaire designed for cohesive, architectural integration across landscape and built environments. Engineered for versatility, the EB2 offers multiple configurations—uplight, marker light, or turret top—within a single fixture form, allowing for a unified design aesthetic across diverse applications.

With a compact form factor and output up to 920 lumens, the EB2 delivers precise illumination through accessories like glare shields, wall-wash lenses, and hex-cell louvres. Lighting options include RGBW, RGBA, Tunable White, and Static White, supported by control protocols such as DMX/RDM via Powersync, DALI and non-dim.

Built with a corrosion-resistant brass housing, IP68 factory-sealed construction, and advanced thermal regulation, the EB2 ensures long-term durability in harsh outdoor environments. Its flexible mounting options and drive-over rating make it ideal for everything from pathways to architectural features, delivering both performance and design integrity.

Adjustability

LS3020 / LS3022



vertical aiming



15° tilt



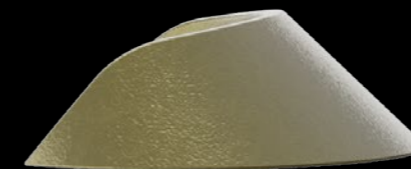
vertical aiming
with glare shield



15° tilt
with glare shield

Glare Control

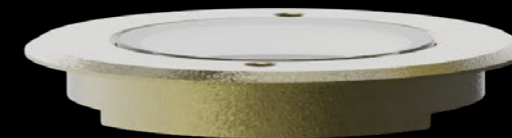
LS3020 / LS3022



Glare Shield
Direct Burial

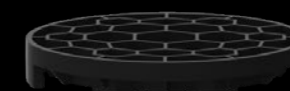


Glare Shield
Pre-Install

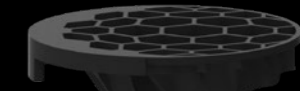


Luminaire Lid

Internal Louver
Upright



Internal Louver
15° Tilt



Luminaire Body



One of the standout features of the Erden Brass EB2 is the innovative honeycomb louvre and the external glare shield. Both accessories seamlessly integrate into the design of the fixture and enhances light control by effectively managing glare and directing the light exactly where it's needed.

Mounting

The Erden Brass family of luminaires is available with three installation options:

- ✓ Direct Burial
- ✓ Pre-Installation Concrete Blockout
- ✓ 4" Conduit Mount



Direct Burial

The luminaire is installed directly within the substrate like soil, turf or concrete.

LS6388 Pre-Installation Kit*

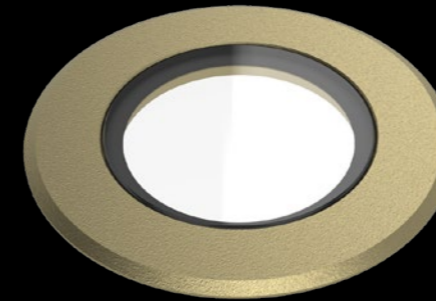
The concrete blockout and is intended for installation before the luminaire. This method ensures the luminaire itself is not damaged during concreting or other site works.

LS6389 Conduit Mount

A 4" (100mm) SCH 40 conduit can be used during the concrete pouring process. This ensures the luminaire itself is not damaged during site works. The luminaire can be installed once site work is completed.

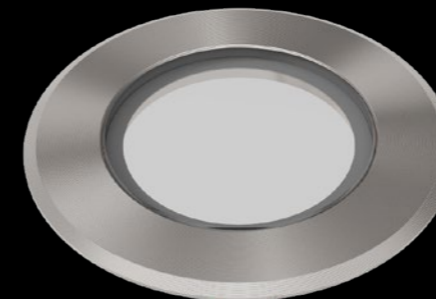
Lids

Brass Lid



Crafted from solid brass and tumbled for a natural patina, these lids offer timeless elegance with rugged durability. Ideal for coastal or high-traffic areas, they resist corrosion while blending seamlessly into the landscape, enhancing the fixture's premium aesthetic and longevity.

Stainless Steel Lid



The cast 316 stainless steel top offers exceptional corrosion resistance. Its distinctive crystalline finish reflects a high-alloy composition, ensuring lasting durability and performance in coastal, saline, and exposed environments - ideal for outdoor applications where strength and style matter.

Stainless Steel Turret Top



The cast 316 stainless steel turret top offers exceptional corrosion resistance. Its distinctive crystalline finish reflects a high-alloy composition, ensuring lasting durability in exposed environments. Available in 1, 2, and 4 aperture configurations for flexible, high-performance outdoor applications.

Erden Brass EB2-U (LS3320/LS3322)

LS3320	LS3322
810 lm	920 lm
9W	11W

Premium Luxeon LEDs

Optional Honeycomb Louver



Exceptional optical purity and load strength.



Integrated active thermal management system.

15°
0° or 15° tilt
0°

Reduces external glass temperatures to human-friendly levels for public spaces.

IP68
IK8

Choice of stainless steel or brass lid.



Integrated control options.



Factory installed, 100% water-tight cable entry that blocks moisture from entering the luminaire.

Robust and durable cast brass housing.

Erden Brass EB2-D

(LS3326/LS3328)

LS3326	LS3328
210 lm	210 lm
5 W	5 W

Reduces external glass temperatures to human-friendly levels for public spaces.

IP68
IK8

Optional Custom Gobo


Choice of stainless steel or brass lid.

Premium Luxeon LEDs

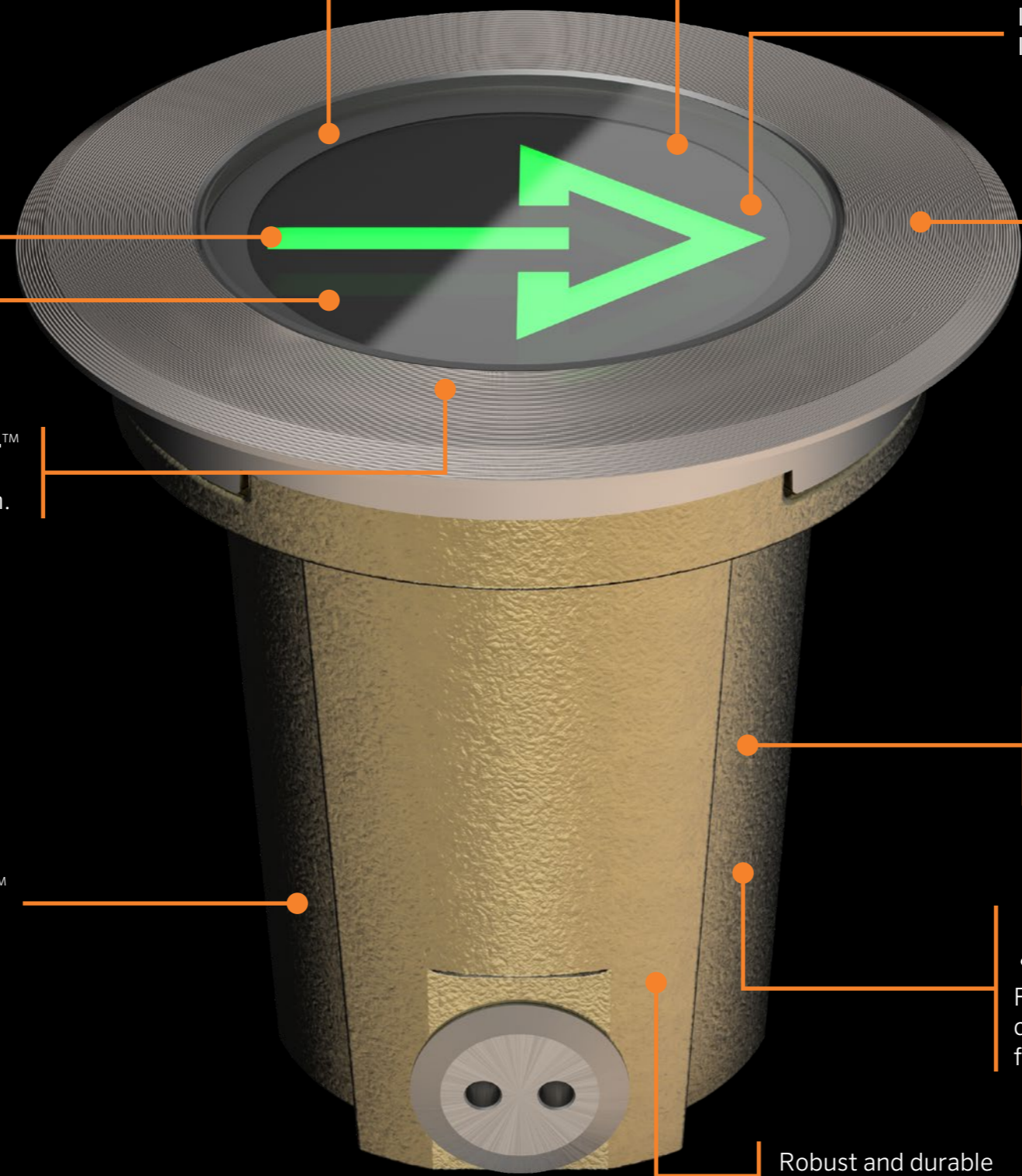
 **opticlear**[™]
Exceptional optical purity and load strength.

   **powersync**[™]
Integrated control options.

 **cooldrive**[™]
Integrated active thermal management system.

 **microantileach**[™]
Factory installed, 100% water-tight cable entry that blocks moisture from entering the luminaire.

Robust and durable cast brass housing.



Erden Brass EB2-S

(LS3720/LS3722)

LS3720	LS3722
70 lm*	65 lm*
<10W	<10W

IP68
IK10

Available in One , Two & Four Apertues

Premium Luxeon LEDs

DALI   **powersync™**

Integrated control options.

 **cooldrive™**

Integrated active thermal management system.

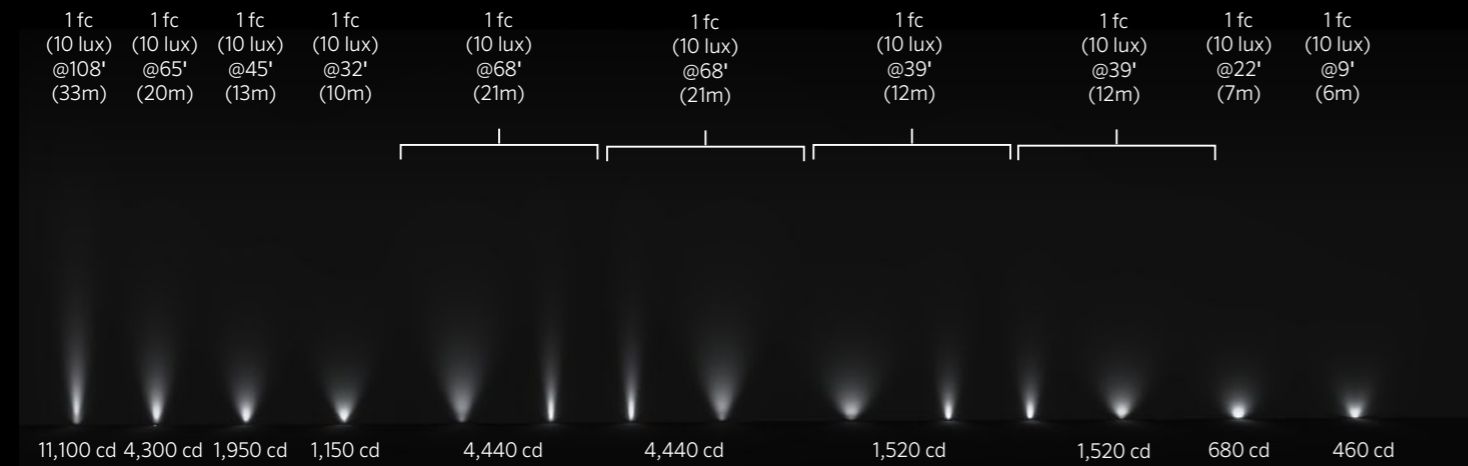
 **microantileach™**

Factory installed, 100% water-tight cable entry that blocks moisture from entering the luminaire.

Robust and durable cast brass housing.

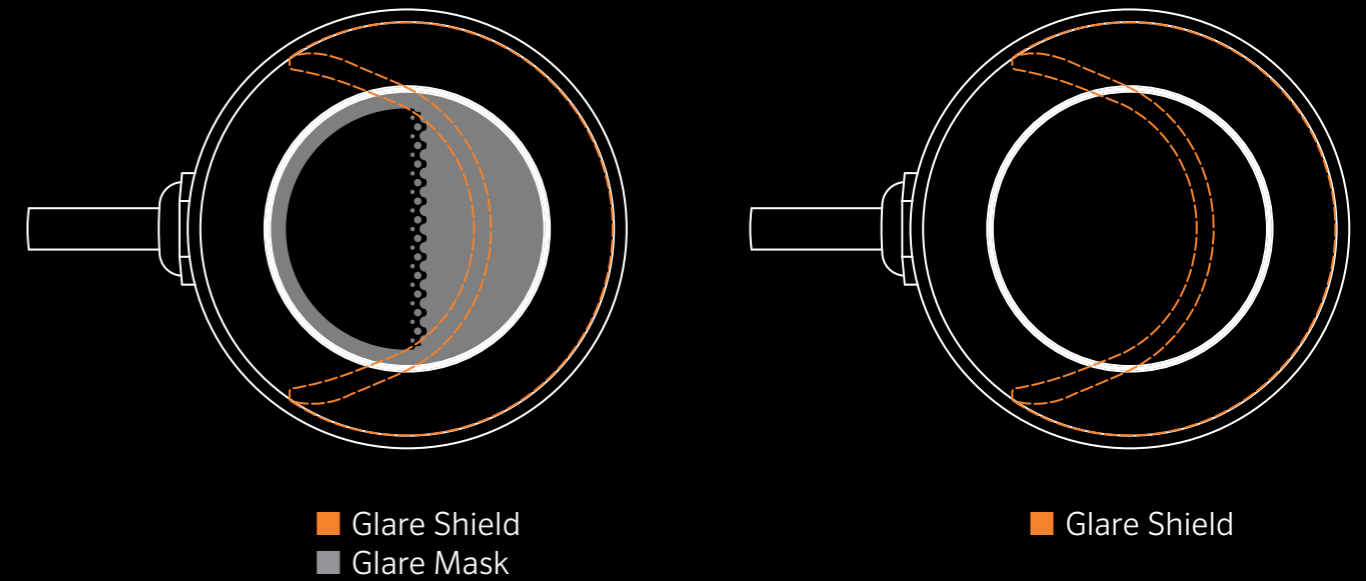
Precision & Performance

Erden Brass EB2-U
 11,100 cd
 810lm
 <9W
 @4000K

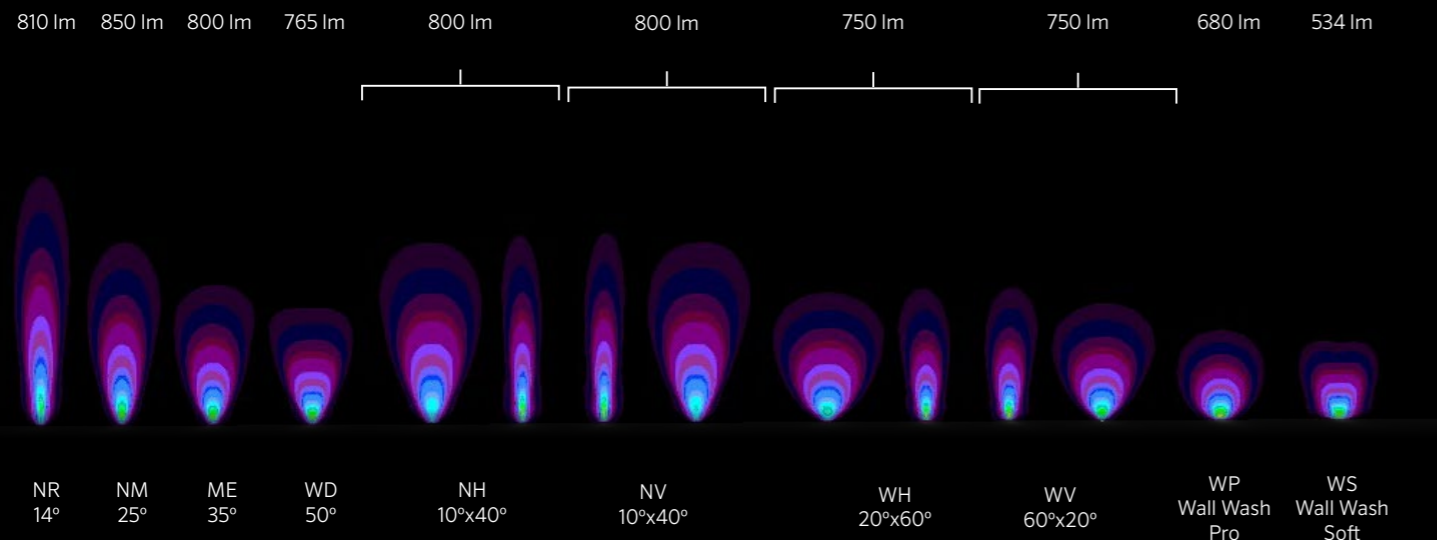


Glare Control

All glare control components project the light towards the cable entry.

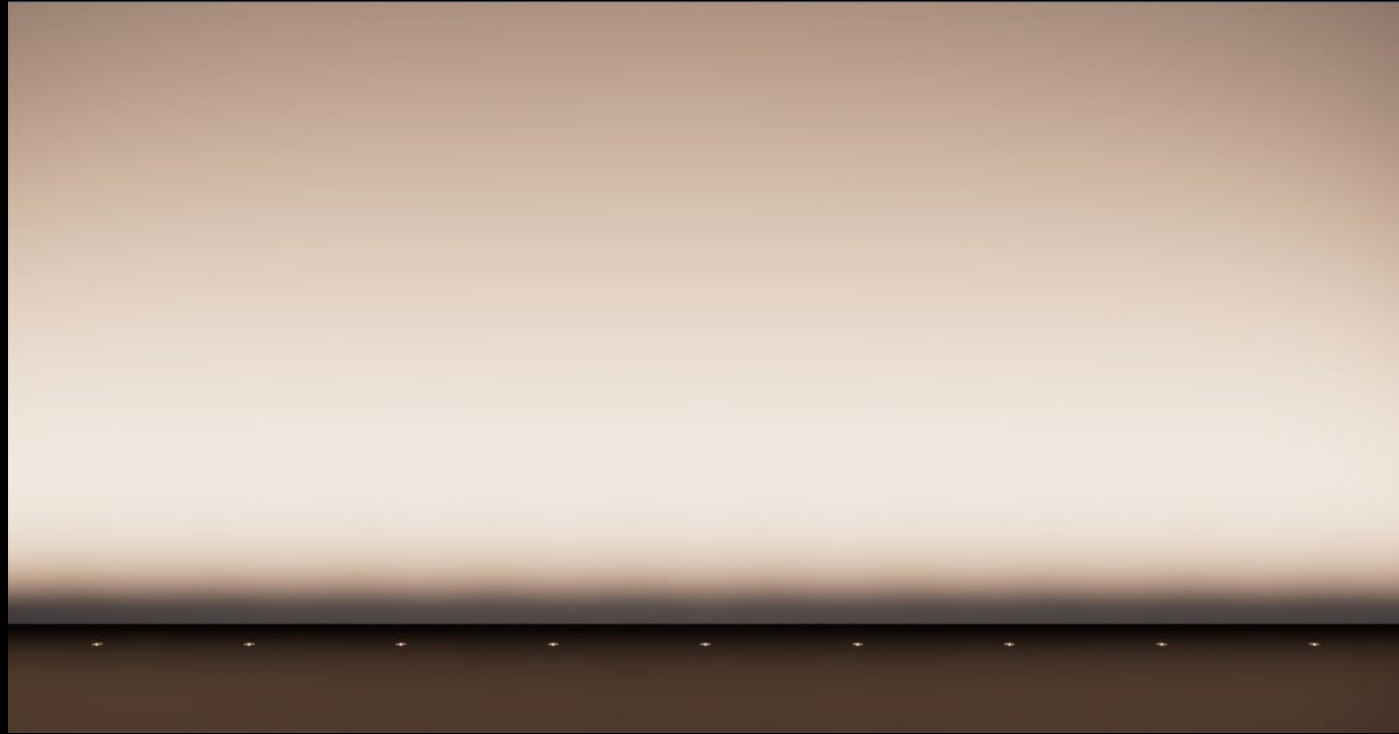


Wall Wash



Wall Wash Soft Spacings

Wall Height 8m (26ft)



Wall height 8m (26ft) using LS332x with WS lens. Luminaire wall offset 2.0m (6.5ft). Luminaire spacing 1.9m (6.2ft). Average Illuminance 10 lx (0.9 fc).

Wall Height 4m (13ft)



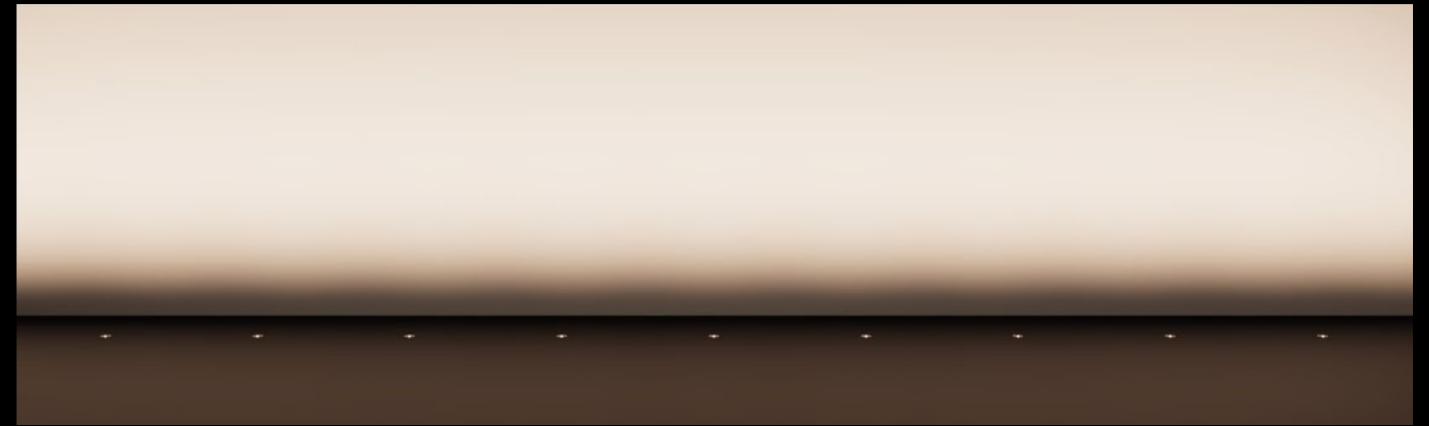
Wall height 4m (13ft) using LS332x with WS lens. Luminaire wall offset 2.0m (6.5ft). Luminaire spacing 1.9m (6.2ft).

Wall Wash Pro Spacings

Wall Wash Soft Superior Uniformity, Lower Illumination.

Wall Wash Pro High Illumination, Good Uniformity.

Wall Height 4m (13ft)



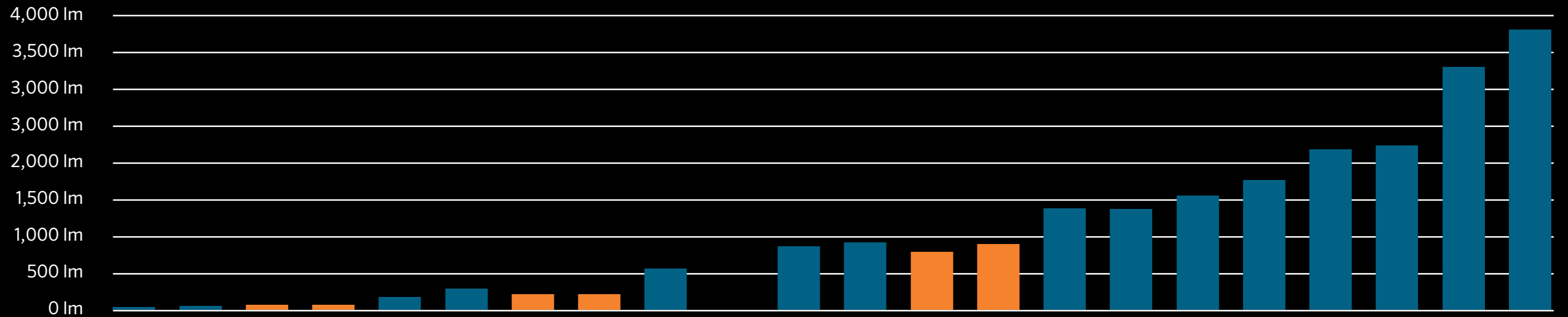
Wall height 4m (13ft) using LS332x with WP lens. Luminaire wall offset 1.4m (4.6ft). Luminaire spacing 1.8m (5.9ft). Average Illuminance 25 lx (2.3 fc).

Wall Height 4m (13ft)



Wall height 4m (13ft) using LS332x with WP lens. Luminaire wall offset 1.4m (4.6ft). Luminaire spacing 1.8m (5.9ft).

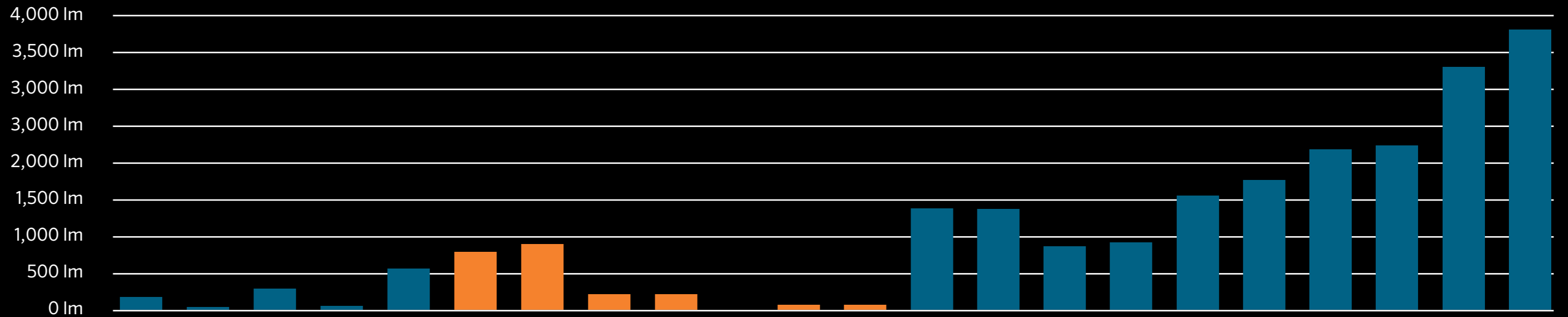
In-Ground Complete Range



Product	LS9409	LS553	LS3720	LS3722	LS9401	LS563	LS3326	LS3328	LS793	LS3020	LS3022	LS3320	LS3322	LS3330	LS3332	LS3040	LS3042	LS3060	LS3062	LS3080	LS3082
Short Code	VE9	VI1	EB2-S	EB2-S	VE1	VD1	EB2-D	EB2-D	EV7	E2	E2	EB2-U	EB2-U	EB3	EB3	E4	E4	E6	E6	E8	E8
Total Lumens (lm)	20	53	70*	65*	180	259	210	210	552	810	920	810	920	1,420	1,400	1,540	1,850	2,245	2,390	3,338	3,800
Power Consumption (W)	3	2	<10	<10	2.8	3	5	5	7.9	9	10	9	11	15	14	20	18	25	25	40	32

*Output is per aperture. Luminaire is available with 1, 2 & 4 apertures.

In-Ground Complete Range



Family



Product

LS9401 LS9409 LS553 LS563 LS793 LS3320 LS3322 LS3326 LS3328 LS3720 LS3722 LS3330 LS3332 LS3020 LS3022 LS3040 LS3042 LS3060 LS3062 LS3080 LS3082

Short Code

VE1 VE9 VI1 VD1 EV7 EB2-U EB2-U EB2-D EB2-D EB2-S EB2-S EB3 EB3 E2 E2 E4 E4 E6 E6 E8 E8

Total Lumens (lm)

180 20 53 259 552 810 920 210 210 70* 65* 1,420 1,400 810 920 1,540 1,850 2,245 2,390 3,338 3,800

Power Consumption (W)

2.8 3 2 3 7.9 9 11 5 5 <10 <10 15 14 9 10 20 18 25 25 40 32

*Output is per aperture. Luminaire is available with 1, 2 & 4 apertures.



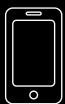
Asia Pacific

Brisbane Technology Park
77 Brandl Street, Eight Mile Plains
Queensland, 4113, Australia
P: +61 7 3854 5000
F: +61 7 3854 5001
E: sales@lumascope.com

North America

1940 Diamond Street, San Marcos
California, 92078, United States
P: +1 650 595 5862
F: +1 650 595 5820
E: info@lumascope.com

Discover Erden Brass EB2



lumascope.com

 LUMASCOPE