

ERDEN E2

LS3020 / LS3022



ERDEN E2

LS3020 / LS3022



The new Erden E2, LS3020, and LS3022 ingrade/inground luminaires are engineered to provide superior lighting performance and exceptional durability for demanding outdoor environments. With an output of over 820 lumens at 9W in Powersync and over 920 lumens in Foundation versions (0-10V, DALI, and non-dim), these luminaires are designed for versatile applications, offering precise control and outstanding efficiency.

The Powersync version (DMX/RDM capable) allows for advanced control, ideal for large-scale, dynamic lighting designs. In addition to Powersync, the luminaires are also available with 0-10V, DALI, non-dimmable, and low-voltage control options, offering flexibility to meet the requirements of various commercial and architectural projects.

The 360° rotatable gimbal assembly within the housing provides -5° to 15° adjustability, enabling better aiming and more precise control over light distribution. This feature, combined with a range of beam options in static white, color, and tunable white, ensures optimal lighting for any application, whether it's for highlighting architectural features or creating dynamic outdoor atmospheres.

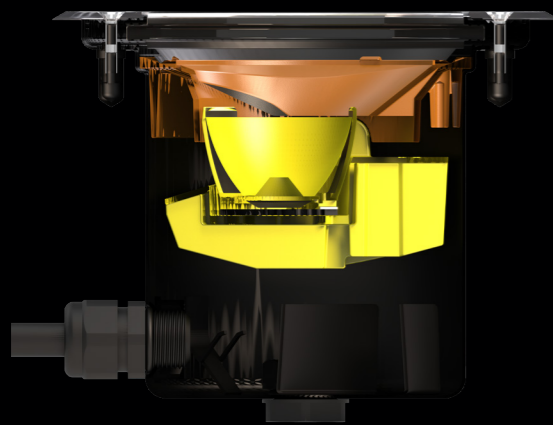
Designed to withstand the toughest environments, the IP68 rating ensures water and dust resistance, while the IK9 rating guarantees protection against impact. With a static load rating of 4,409 lbs (2000 Kg), these luminaires are ideal for areas such as driveways, pathways, and public spaces.

The 4 lid options for direct burial and 2 for pre-installation allow for flexible installation, while the stainless steel housing with emissivity coating enhances heat transference, ensuring the luminaire operates efficiently over extended periods.

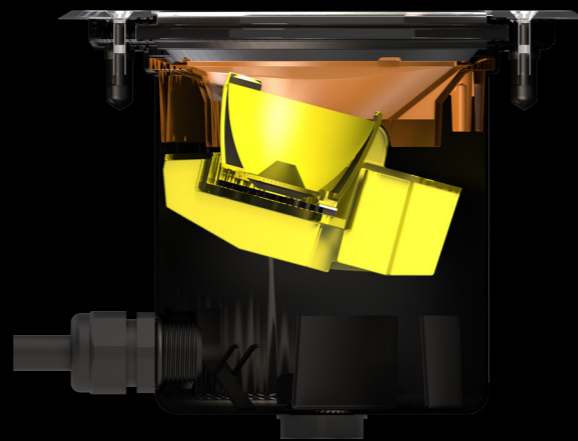
Incorporating advanced Lumascope technologies such as Human Touch, Opticlear, Cool Drive, Easy Glow, and Micro Antileach, these luminaires deliver superior optical clarity, enhanced heat management, and increased durability, ensuring long-lasting performance in even the harshest outdoor conditions.

The Erden E2, LS3020, and LS3022 luminaires offer the perfect combination of high output, versatile control options, and durability, making them an ideal choice for commercial, architectural, and public space lighting. Their range of features and technologies ensures optimal performance and efficiency in a variety of outdoor applications.

ADJUSTABILITY

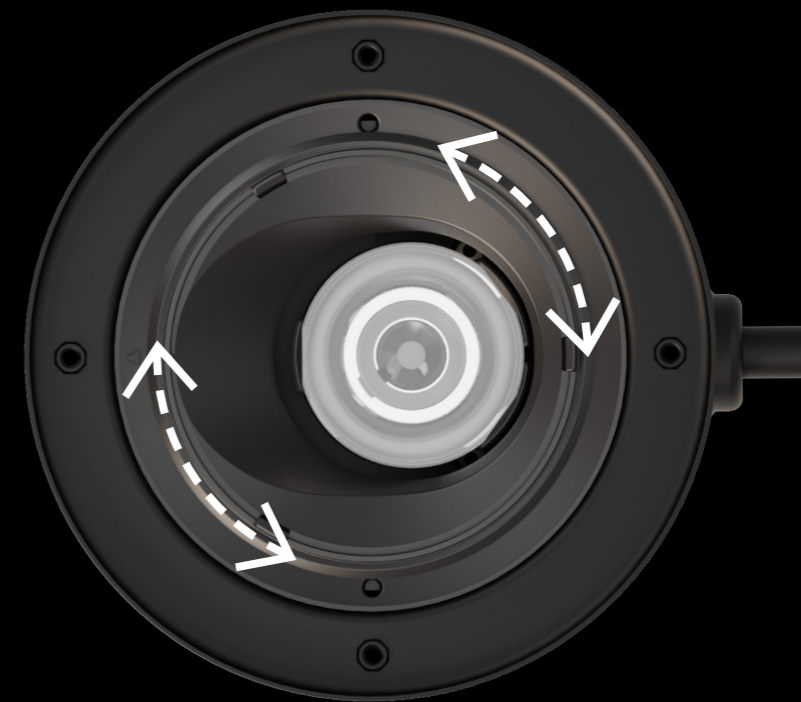


Factory sealed for vertical aiming*



-5° to 15° adjustable

AIMING



Gimble Assembly can be rotated 360° within housing

* If adjusting the LED engine for aiming, installation instructions must be followed to ensure no moisture is trapped within the luminaire

MOUNTING



Direct Burial



Pre-Installation

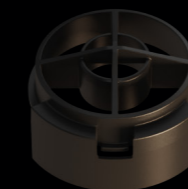


The Erden E2 is available in two mounting options to suit various installation needs: a Direct Burial version, designed for mounting directly in earth, and a Pre-Installation version, ideal for mounting in concrete. Both options provide flexible and durable solutions for outdoor lighting applications, ensuring optimal performance and ease of installation.

GLARE CONTROL

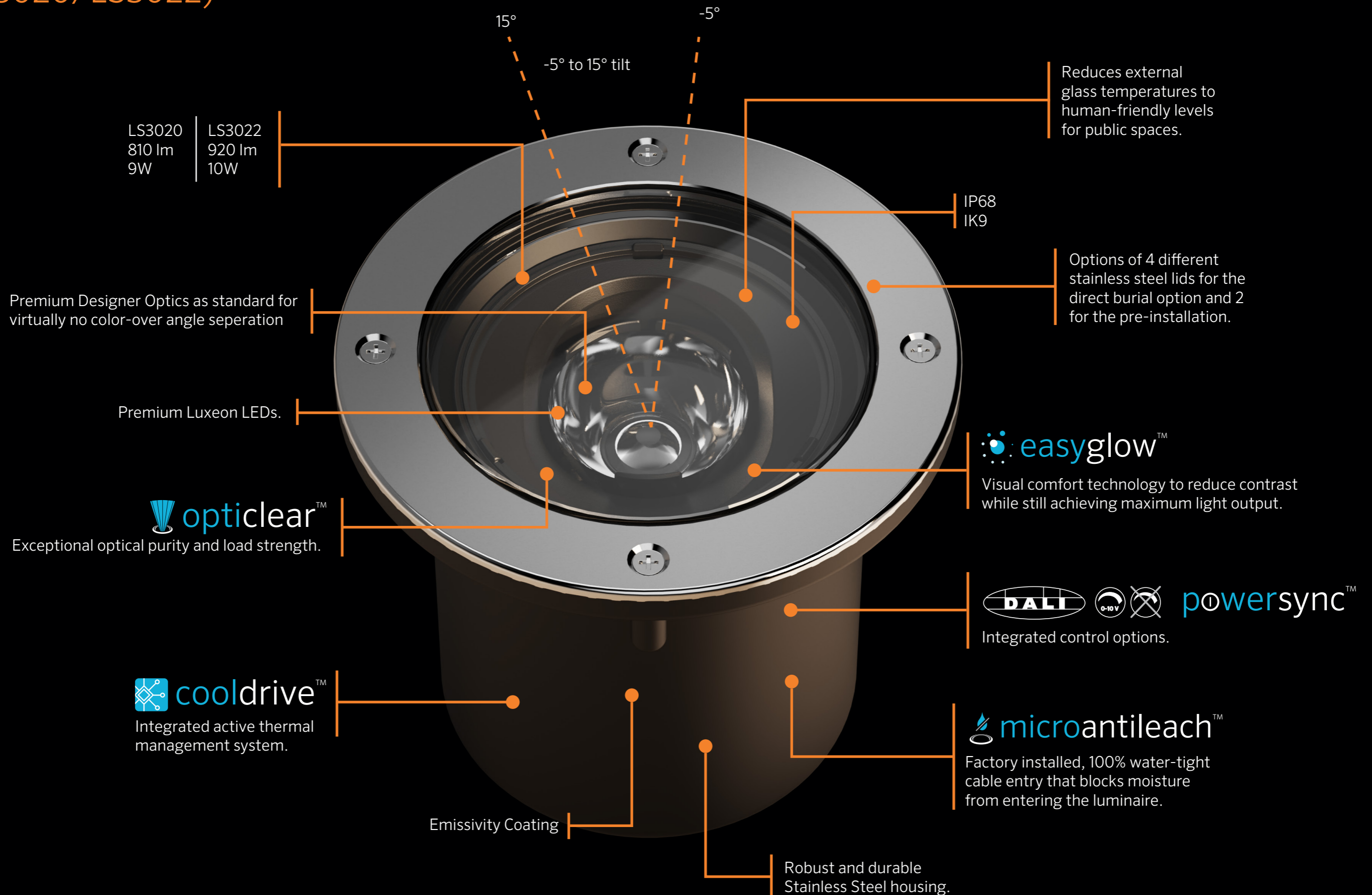


One of the standout features of the Erden E2 is the innovative concentric louvre, which can be easily configured to integrate seamlessly into the design of the fixture. This adjustable louvre enhances light control by effectively managing glare and directing the light exactly where it's needed. Whether you're aiming for focused task lighting or softer ambient illumination, the concentric louvre ensures optimal performance and flexibility. It offers superior light quality and control in any environment.



ERDEN E2

(LS3020/LS3022)



COLOR

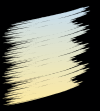
The **Erden E2** Luminaire is a highly versatile outdoor lighting solution designed for architectural applications, offering configurations in RGBW, RGBA, Tunable White, and Static White. With a broad range of CCTs (Correlated Color Temperatures), the **Erden E2** is tailored to meet the varied demands of commercial and architectural lighting projects.



The **RGBW** version excels in producing rich, deep purples, blues, and vibrant saturated colors, making it ideal for creating bold visual effects and accentuating architectural features, facades, or event spaces. The RGBW configuration is perfect for projects that require high-impact lighting with dynamic, eye-catching colors.



The **RGBA** configuration includes an amber channel, providing a warmer, more natural palette. This enables the creation of soft sunset tones and pastel shades, perfect for enhancing architectural elements and establishing a welcoming atmosphere in outdoor plazas, walkways, and hospitality spaces.



The **Tunable White** option offers a wide color temperature range from 2700K to 6500K, providing designers with the flexibility to adjust the lighting to suit the specific needs of a project. Whether you require warmer tones or cooler whites, the Tunable White configuration is ideal for adapting the lighting to enhance the architectural environment at any time of day or night.



The **Static White** versions are available in a range of CCTs, including 2700K, 3000K, 3500K, and 4000K, with additional CCT options available upon request. These configurations offer consistent, high-quality white light for a variety of outdoor applications, ensuring precise, reliable illumination.

Built for durability in outdoor environments, the Erden E2 combines versatile color options and CCT flexibility to provide high-performance lighting that enhances architectural designs. Whether for ambient illumination, feature highlighting, or dynamic lighting effects, the Erden E2 is an ideal choice for any outdoor project.



PHOTOMETRY

The Erden E2 offers two distinct beam angle sets: one for color (RGBW, RGBA, Tunable White) and one for static white.

For color applications, the available beam angles are:

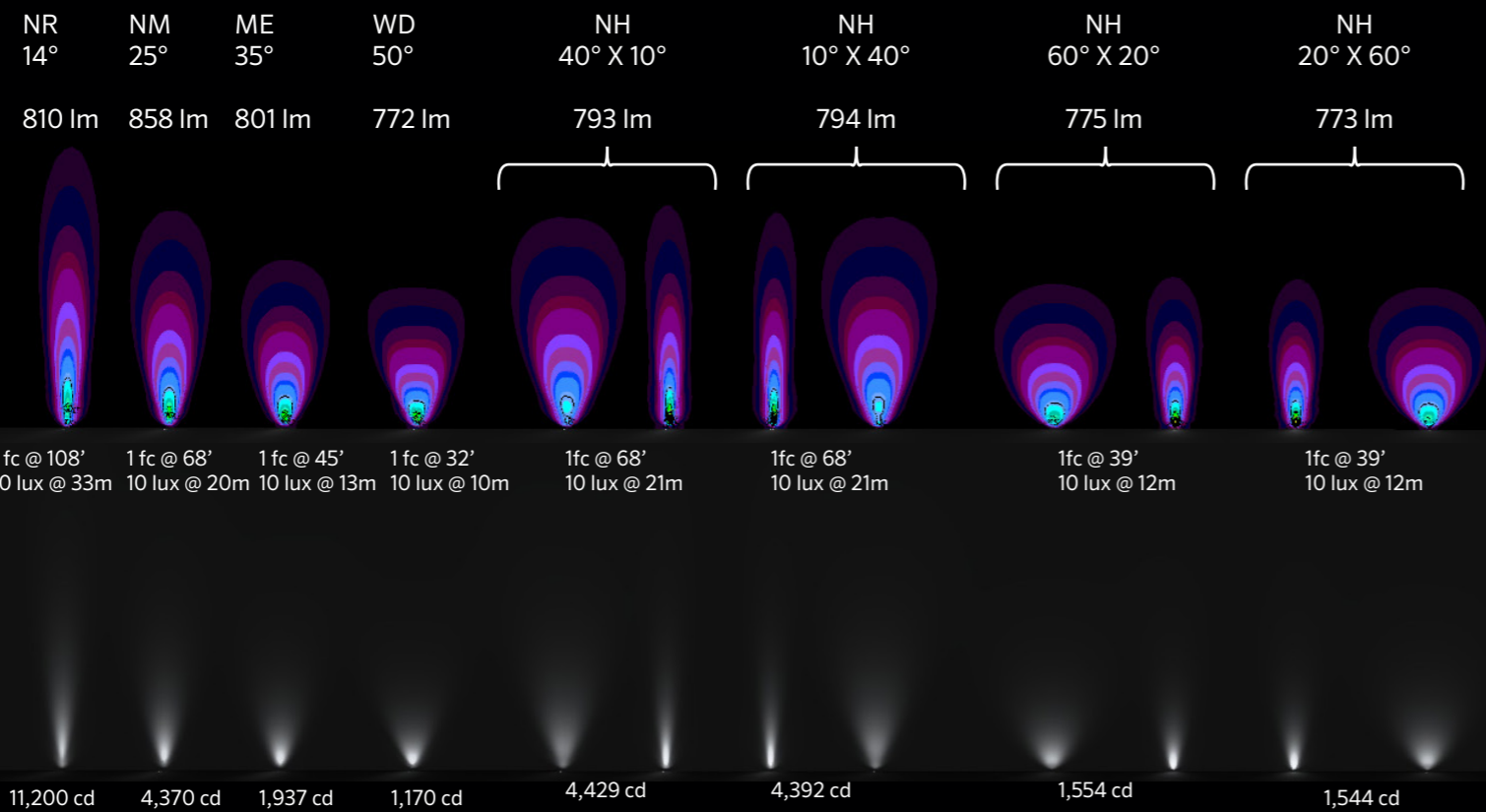
- Narrow 12°, Narrow Medium 20°, Medium 35°, Wide 45°, and Wide Flood 55°.

For static white, the luminaire features symmetrical and elliptical options:

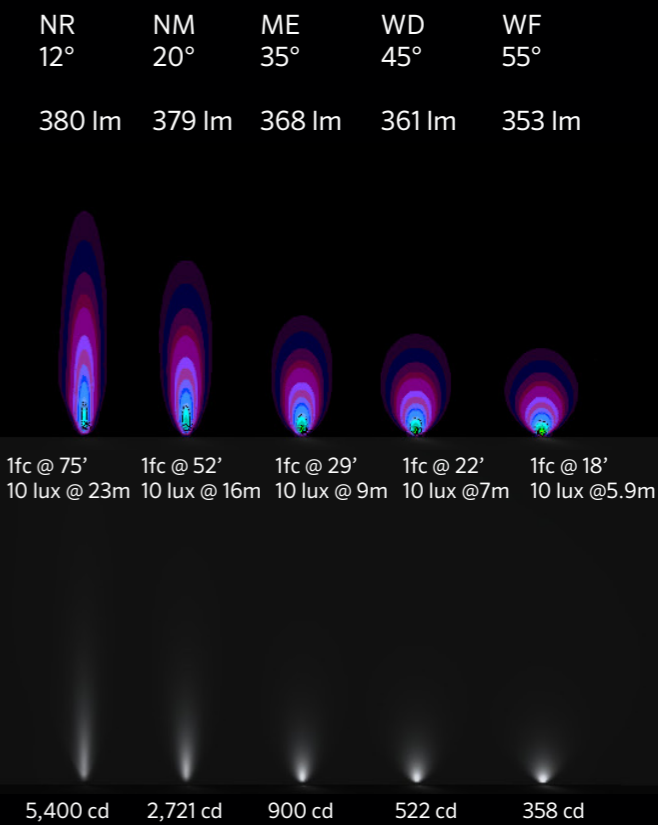
- Symmetrical: Narrow 14°, Narrow Medium 25°, Medium 35°, and Wide 50°.
- Elliptical: Wide Vertical 60° x 20°, Wide Horizontal 20° x 60°, Narrow Vertical 20° x 60°, Narrow Vertical 40° x 10°, and Narrow Horizontal 10° x 40°.

With a luminous output of over 810 lumens and a luminous intensity exceeding 11,200 candelas, the Erden E2 ensures powerful, focused illumination with precise light distribution for a range of outdoor applications.

Static White (LS3020)

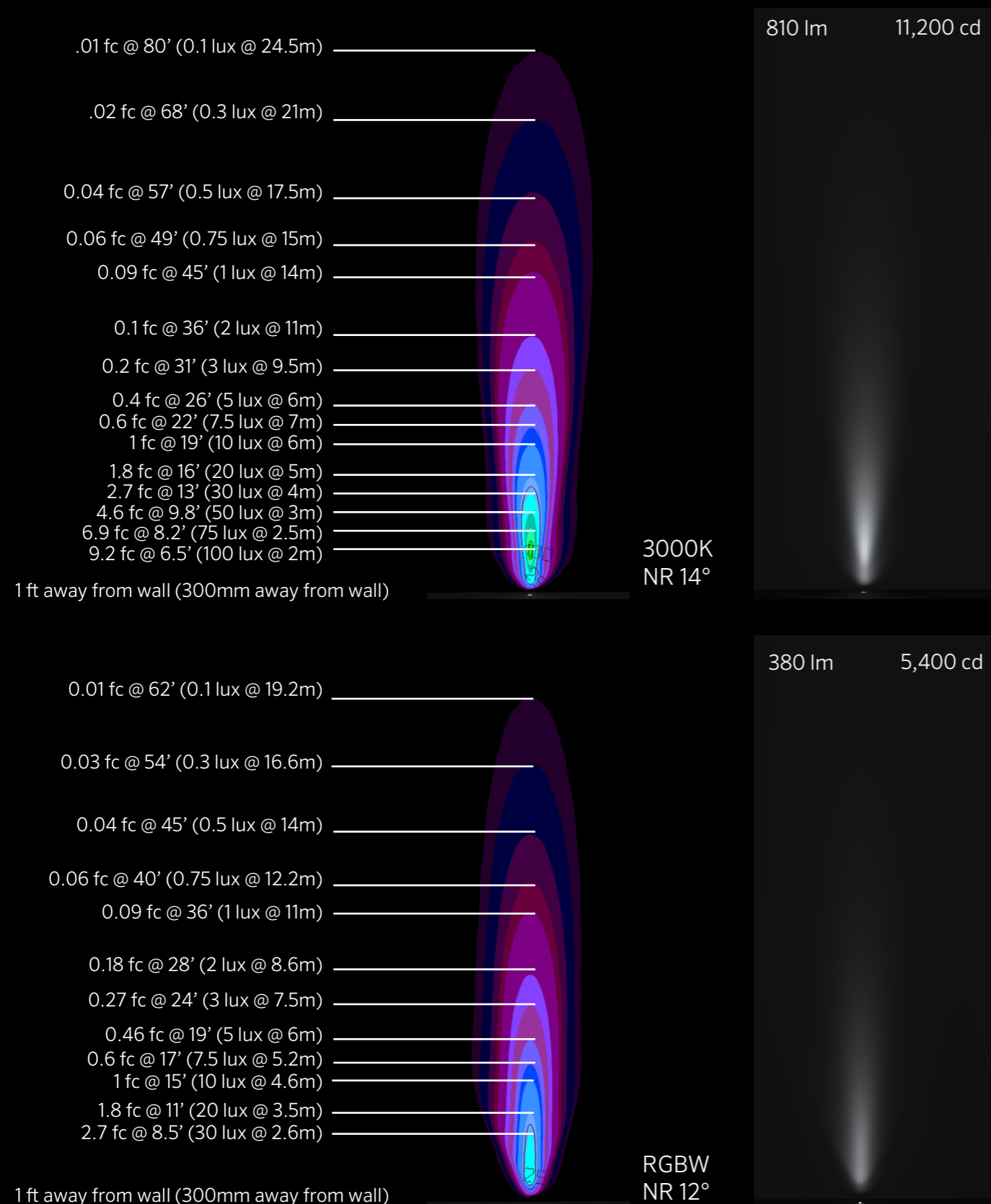


Color (LS3020)



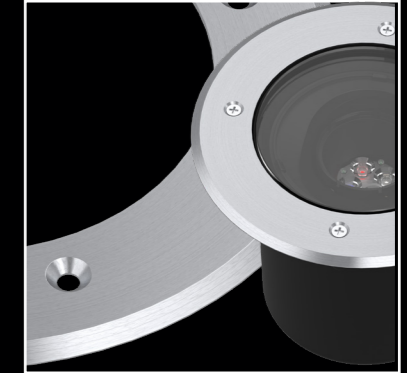
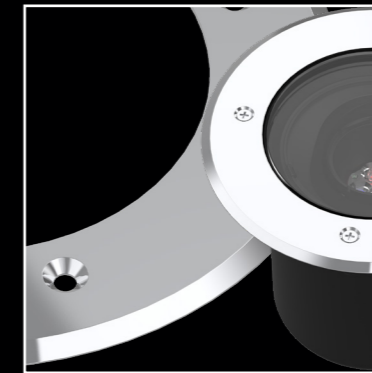
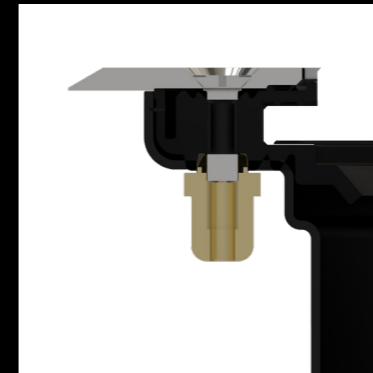
ILLUMINATION

The following images demonstrate the illumination levels on a wall when both the color and static white fittings are placed 1ft (300mm) away. This is measured using a narrow 12° beam in RGBW and a narrow 14° beam in 3000K static white. In static white, the light provides 1 foot-candle (10 lux) at 19 feet (6m). In color, the light reaches 1 foot-candle (10 lux) at 15 feet (4.6m). These measurements highlight the varying spread and intensity of light for both applications.



LIDS

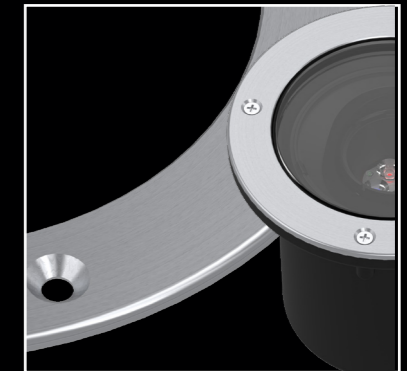
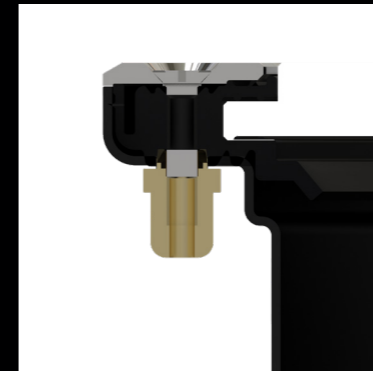
Direct Burial



Round, Stainless Steel,
Polished, (D)

Round, Stainless Steel,
Brushed, (I)

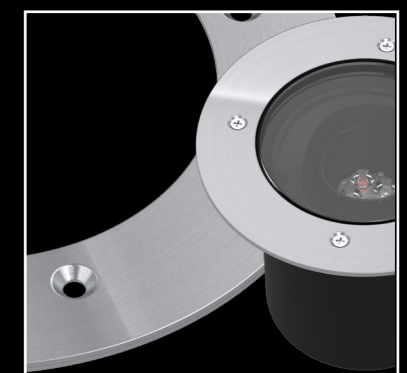
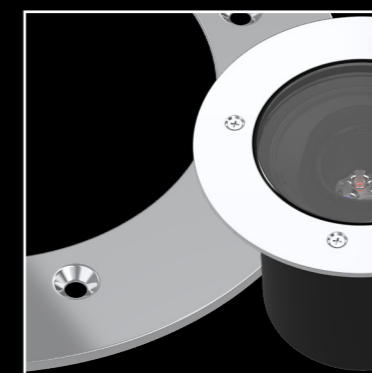
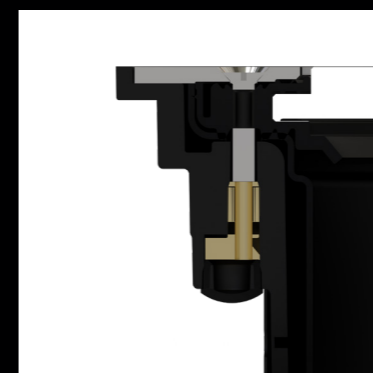
Direct Burial



Round recessed,
Stainless Steel,
Polished, (B)

Round recessed,
Stainless Steel,
Brushed, (H)

Pre-Installation



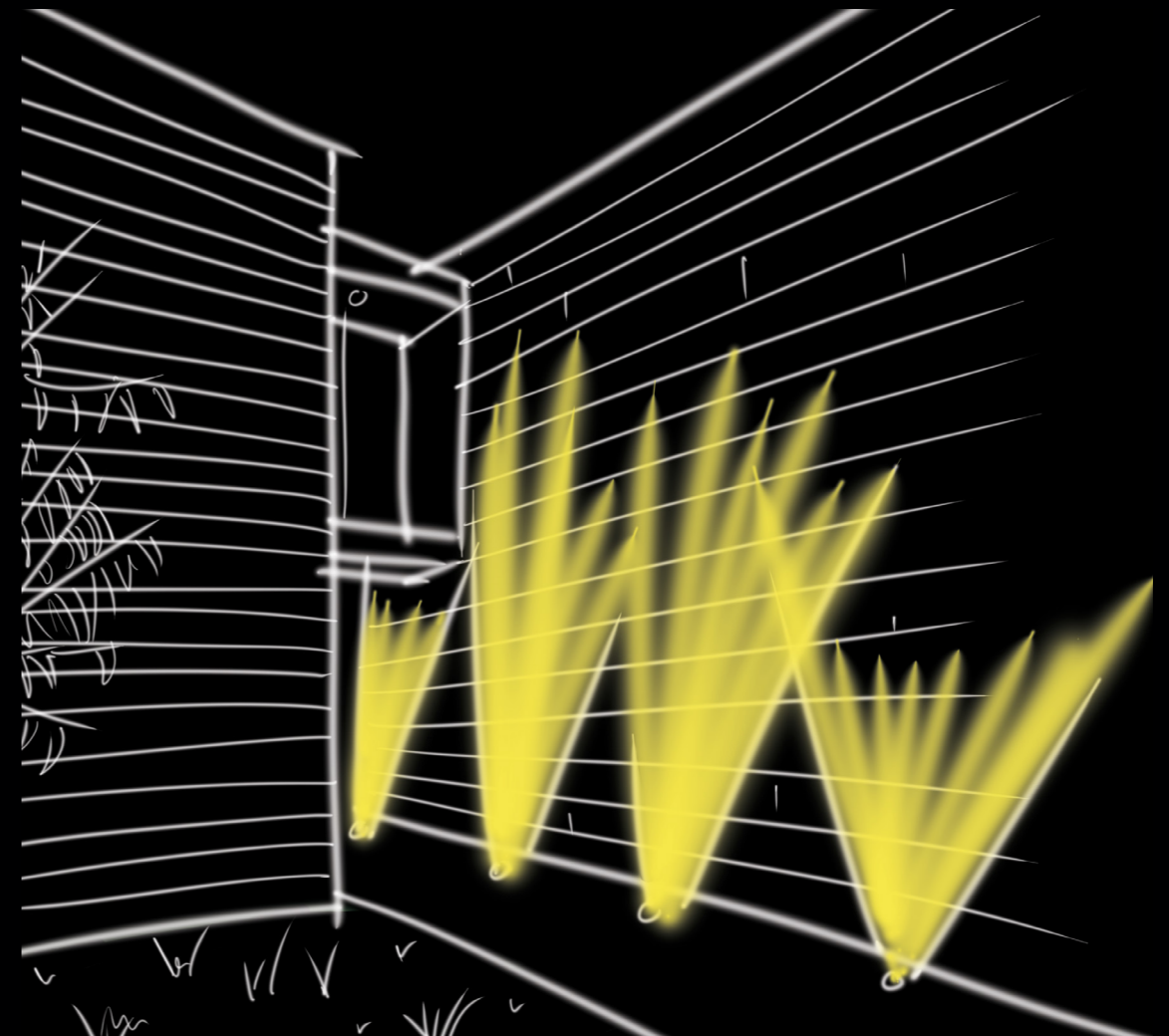
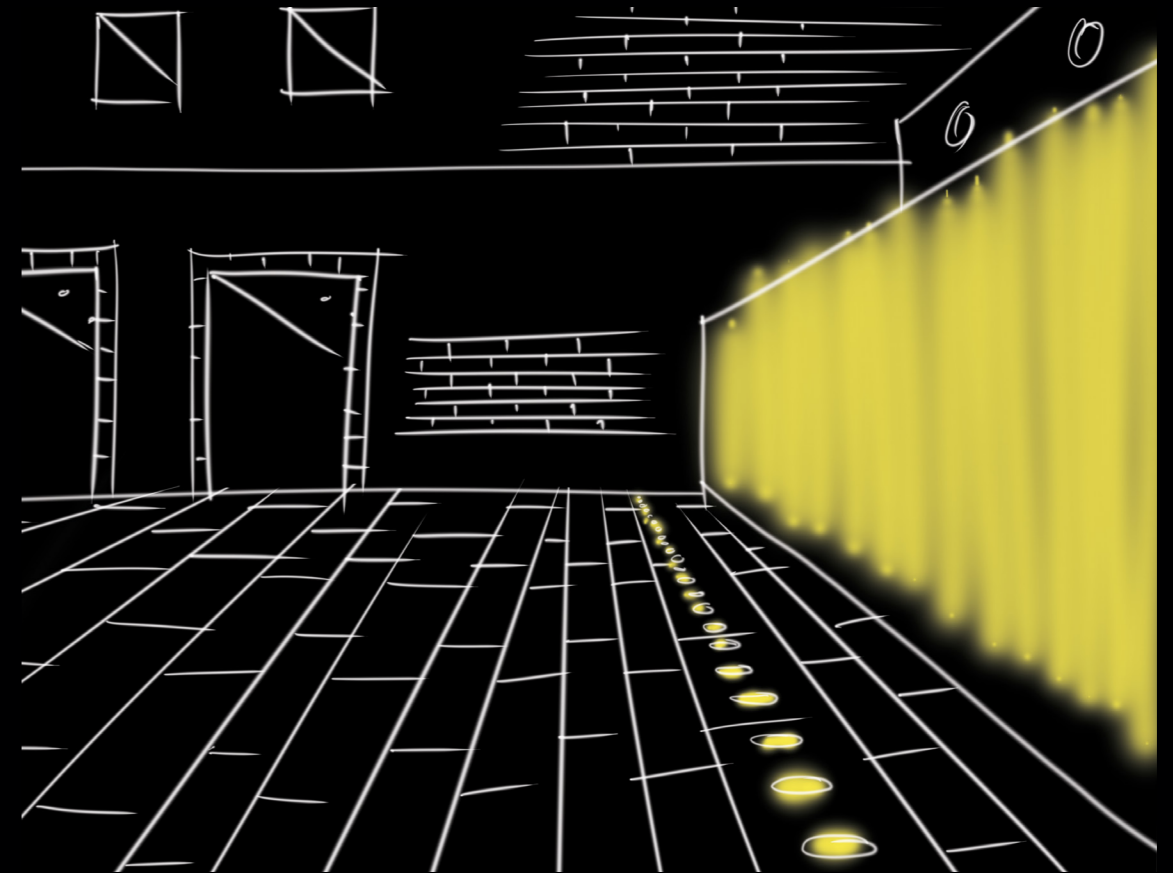
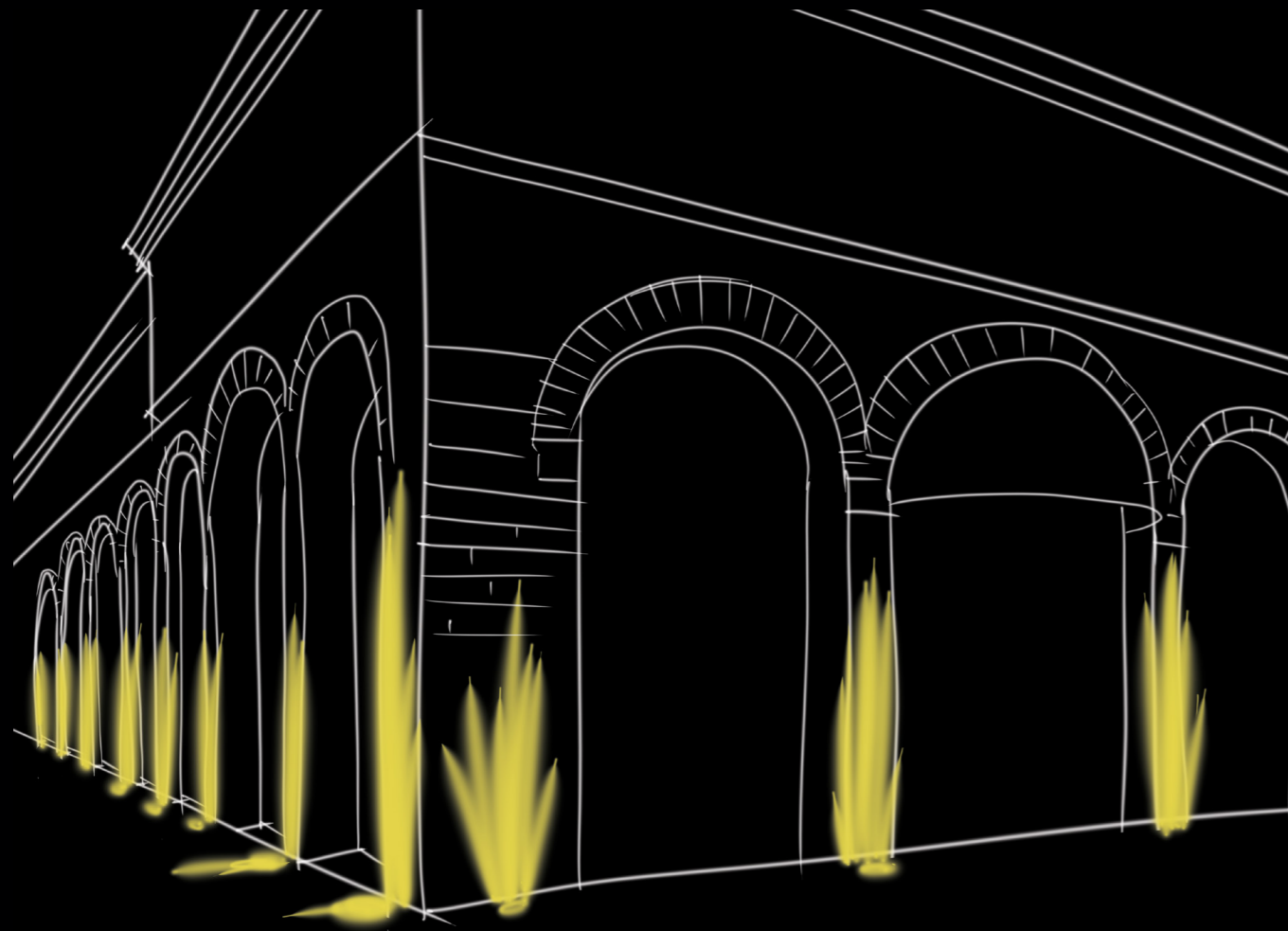
Round flush,
Stainless Steel,
Polished, (M)

Round flush,
Stainless Steel,
Brushed, (N)

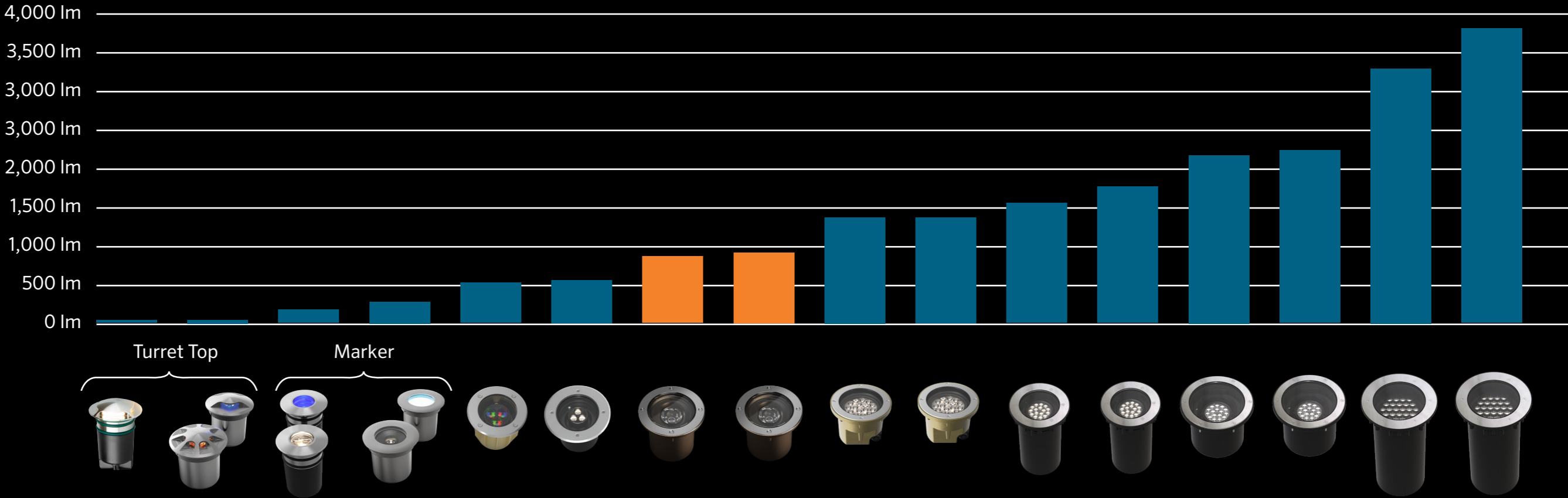
APPLICATIONS

The Erden E2 is engineered to seamlessly blend into both architectural and landscape settings, offering exceptional durability and performance. With an IP68 rating, this fixture is fully protected against dust and capable of withstanding prolonged immersion in water, ensuring reliable operation even in the harshest environments. The IK9 impact rating guarantees that it can withstand significant mechanical stress, making it ideal for high-traffic areas and outdoor spaces.

Versatile in design, the luminaire provides a wide range of beam angles and colour options, from static white to tunable white, allowing you to craft dynamic lighting effects that transform spaces and evoke specific moods. Whether illuminating a garden, highlighting architectural features, or creating a stunning focal point, the adjustable beam angles and colour temperature options offer complete control over your lighting environment. This luminaire is ideally suited for enhancing both public and private outdoor environments, enabling precise control over lighting intensity and atmosphere to achieve a wide spectrum of visual effects, from vibrant, high-contrast illuminations to subtle, ambient lighting schemes.



IN-GROUND COMPLETE RANGE



Product	LS9409	LS553	LS9401/9	LS563	LS793	LS393	LS3020	LS3022	LS3330	LS3332	LS3040	LS3042	LS3060	LS3062	LS3080	LS3082
Total Lumens (lm)	20	53	180	259	552	590	810	920	1,420	1,400	1,540	1,850	2,245	2,390	3,338	3,800
Power Consumption (W)	3	2	2.8	3	7.9	10	9	10	15	14	20	18	25	25	40	32



Discover The Erden E2!



 LUMASCAPE